



TOOLS REQUIRED

- Crimping tool and connectors, or solder gun, solder, and heat shrink
- Tape
- Wire cutter
- Zip ties
- Multimeter

For **Dash Disassembly Instructions**, refer to metraonline.com. Enter the year, make, and model of the vehicle in the **Vehicle Fit Guide for Radio Install kits**.

www.MetraOnline.com



Radio Status Control Harness

Fits Select Ford Models **2020-Up**

Visit AxxessInterfaces.com for more detailed information about the product and up-to-date vehicle specific applications.

FEATURES

- AXRSC radio status control interface required (sold separately)
- Designed for non-amplified vehicles
- Designed for select aftermarket radios*
- Provides accessory power (12-volt 10-amp)
- Retains R.A.P. (Retained Accessory Power)
- Provides NAV outputs (parking brake, reverse, speed sense)
- Allows a visual of HVAC and gauges on aftermarket radio screen*
- Allows adjustment of HVAC functions through select radio's screen*
- Retains audio controls on the steering wheel
- Allows for auto stop/start override (if equipped)
- Works in both single and dual-zone vehicles
- Retains safety chimes (speaker sold separately)
- Allows the retention and adjustment of the OE Personalization Settings
- Plug-n-play installation

*Features retained are dependent on the vehicle application. Refer to vehicle-specific instructions for details.

NOTE: If retaining the B&O amplified system AXA2B-FD1 is needed (sold separately)

TABLE OF CONTENTS

Interface Installation	2
AXRSC Configuration	3

WIRING & ANTENNA CONNECTIONS

Included with Kit: Wiring Harness
 Sold separately: 40-EU55, Antenna Adapter, GPS Antenna Adapter
 RGB Extension Cable: Pioneer part # CD-RGB150E (not sold by Metra)

NOTE: Universal radio harness included. There are many Plug-N-Play harnesses available. Please see Axxessinterface.com for more details.

COMPONENTS

- LD-FD3-PIO
- LD-FD54CAM
- LD-FDGATE

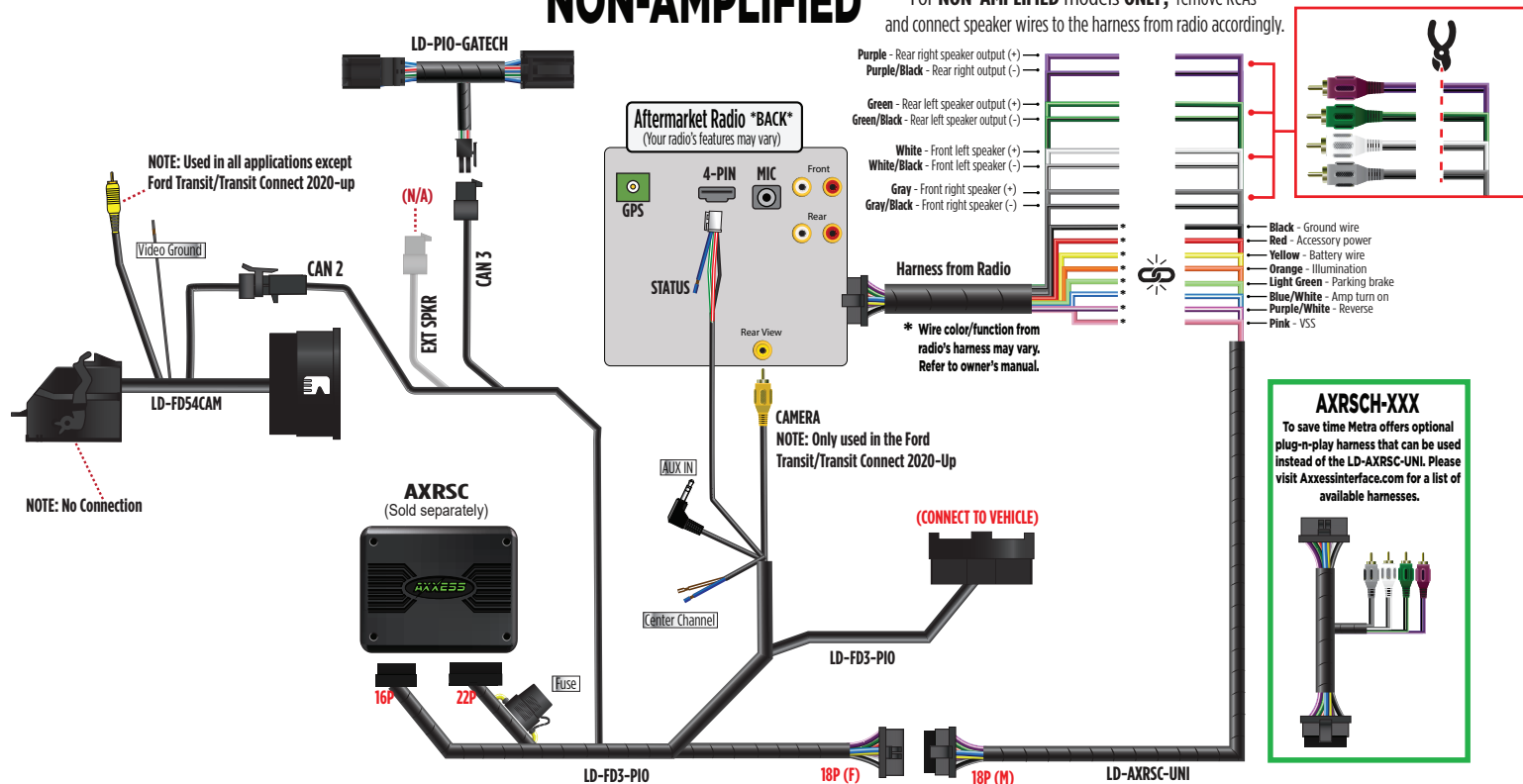
ATTENTION: With the key out of the ignition, disconnect the negative battery terminal before installing this product. Ensure that all installation connections, especially the air bag indicator lights, are plugged in before reconnecting the battery or cycling the ignition to test this product.

NOTE: Refer also to the instructions included with the aftermarket accessory before installing this device.

AXXESS WIRING INSTALLATION

NON-AMPLIFIED

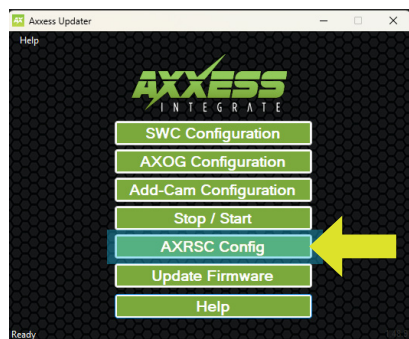
For **NON-AMPLIFIED** models **ONLY**, remove RCAs and connect speaker wires to the harness from radio accordingly.



AXXESS UPDATER PROGRAM: AXRSC CONFIGURATION

AXRSC Configuration

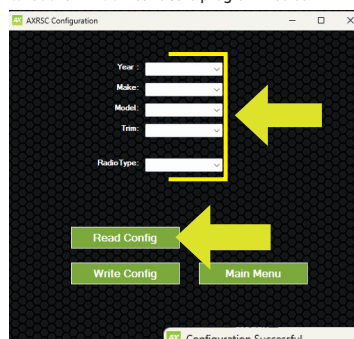
1. Open the Axxess Updater program
2. Select **"AXRSC Config"**. (Figure A)
3. Enter **Year, Make, and Model** of vehicle you are working on. (Figure B)
4. Select **Radio Type**. (Figure B)



(Figure A)

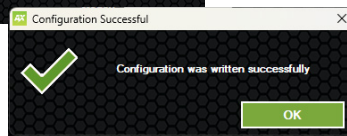
5. Connect the **AXRSC** interface to your computer
6. Select **"Write Config"** (Figure B), and wait for confirmation of **"Configuration was written successfully"** to show on the screen. (Figure C)
7. Click **OK**, disconnect AXRSC interface and install in vehicle. (Figure C)

NOTE: Plugging in the interface and selecting **"Read Config"** will read what the **AXRSC interface** is programmed as.



(Figure B)

(Figure C)





AXRSCH-FD3

INSTALLATION INSTRUCTIONS

Having difficulties? We're here to help.



Contact our Tech Support line at:

386-257-1187



Or via email at:

techsupport@metra-autosound.com

Tech Support Hours (Eastern Standard Time)

Monday - Friday: 9:00 AM - 7:00 PM

Saturday: 10:00 AM - 5:00 PM

Sunday: 10:00 AM - 4:00 PM



**Metra recommends MECP
certified technicians**