

Install option 1 | Rear of saddle bag

1. Using rubbing alcohol, wipe down front of saddle bag. *Suggested area in red.*



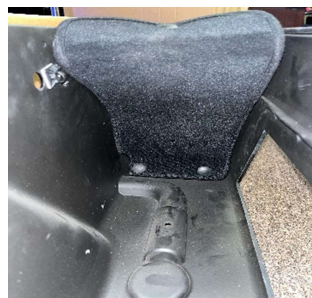
2. Peel adhesive backing and place bracket into saddle bag.



3. Peel adhesive backing and place bracket into saddle bag.



4. Once amplifier has been installed, place cover on bracket using supplied push pins.

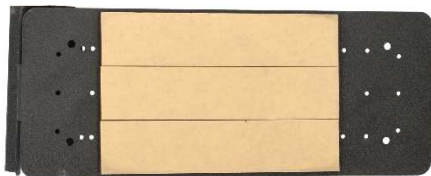


Install option 2 | Front of saddle bag

1. Using rubbing alcohol, wipe down front of saddle bag. *Suggested area in red.*



2. Peel adhesive backing and place bracket into saddle bag.



3. Peel adhesive backing and place bracket into saddle bag.



4. Once amplifier has been installed, place cover on bracket using supplied push pins.

