



# AXAMP-FD2

## INSTALLATION INSTRUCTIONS



### INTERFACE COMPONENTS

- AXAMP-FD2 Amplifier Integration interface
- AXAMP-FD2 vehicle T-harness
- AXAMP-FD2 display T-harness
- Bass knob

### APPLICATIONS

Visit [AxxessInterfaces.com](http://AxxessInterfaces.com) for current application list

## Amplifier Integration Interface

### Fits Select Ford Models 2011-2023

#### INTERFACE FEATURES

- Designed for amplified and non-amplified systems (excluding A2B amplifiers)
- Provides 6 channels of 5-volt RMS audio
- Non-fading full range output (channels 5 & 6)
- Simple plug-n-play installation behind the radio
- No programming required
- Dual-colored LED feedback light
- Input: 50W per channel
- Amp turn-on trigger (DC) 250mA
- 2-channel S/PDIF out (front)

[www.MetraOnline.com](http://www.MetraOnline.com)

For **Dash Disassembly Instructions**, refer to [metraonline.com](http://metraonline.com). Enter the year, make, and model of the vehicle in the **Vehicle Fit Guide** for **Radio Install kits**.



#### TABLE OF CONTENTS

Installation Options .....	2
Installation .....	3
Adding Amp/Amps to a Factory System	
Non-amplified.....	4
Amplified.....	5
Troubleshooting: LED Feedback .....	8

#### TOOLS & INSTALLATION ACCESSORIES REQUIRED

- Crimping tool and connectors, or solder gun, solder, and heat shrink • Tape • Wire cutter
- Zip ties • Multimeter

Visit [AxxessInterfaces.com](http://AxxessInterfaces.com) for more detailed information about the product and up-to-date vehicle specific applications.

**ATTENTION:** With the key out of the ignition, disconnect the negative battery terminal before installing this product. Ensure that all installation connections, especially the air bag indicator lights, are plugged in before reconnecting the battery or cycling the ignition to test this product.

**NOTE:** Refer also to the instructions included with the aftermarket accessory before installing this device.

## INSTALLATION OPTIONS

### Adding a full-range amp and subwoofer to a factory system:

This feature offers the ability to add a full-range amp and sub to a factory system, whether amplified\* or non-amplified. (Refer to **Page 3**)

\* For amplified models the amp must be bypassed/unplugged. Refer to [www.MetraOnline.com](http://www.MetraOnline.com) for the vehicle specific amplifier bypass harness.

**Note:** The interface provides a 12-volt 1-amp output to turn on aftermarket amp(s). If installing multiple amps, an SPDT automotive relay will be required if the amp turn-on current of all amps combined exceeds 1-amp. See MetraOnline.com for available relays.

# INSTALLATION

## Installation:

1. Disassemble the dash, unplug all connectors, and remove the factory radio.\*
2. Install the **AXAMP-FD2 vehicle T-harness** to the vehicle radio harness and make all the necessary connections. Leave the 2-pin amp turn on wire disconnected.
3. Plug the 20-pin harness from the **AXAMP-FD2 T-harness** into the interface.
4. Connect the **Amp Turn-on** wire.
5. Connect the 2-pin **Amp Turn On Wire** to the interface and then connect to the aftermarket amplifiers.
6. Connect RCAs to the **FRONT, REAR or SUB** output of the **AXAMP-FD2 interface**, then connect to the corresponding amplifier.
7. Adjust your aftermarket amplifier to a desired listening level.

**\*NOTE:** Connections **D, E, & F** are only in Navigation models.

Connect **D** to **F** in non-amplified models

Connect **D** to **E** in amplified models

The 2-pin harness **IS CONNECTED** in amplified models and **NOT CONNECTED** in non-amplified models.

## Bass Knob Adjustment:

The bass knob connects to the 2 wires from the 20-pin connector labeled **BASS KNOB**.

The bass knob is used to adjust the output of Channels 5 & 6 of the AXAMP.

Adjustment is as follows:

**Counterclockwise** turn lowers the volume of channels 5 & 6.

**Clockwise** turn raises the volume of channels 5 & 6.

## Amplified Systems:

**Note:** If the vehicle is not amplified, connect the 2-pin harness "**D**" located on the 20-pin interface harness to the 2-pin harness "**F**" on the **vehicle T-harness**.

If the vehicle is amplified, connect the 2-pin harness "**D**" located on the 20-pin interface harness to the 2-pin harness "**E**" located on the 54-pin screen harness.

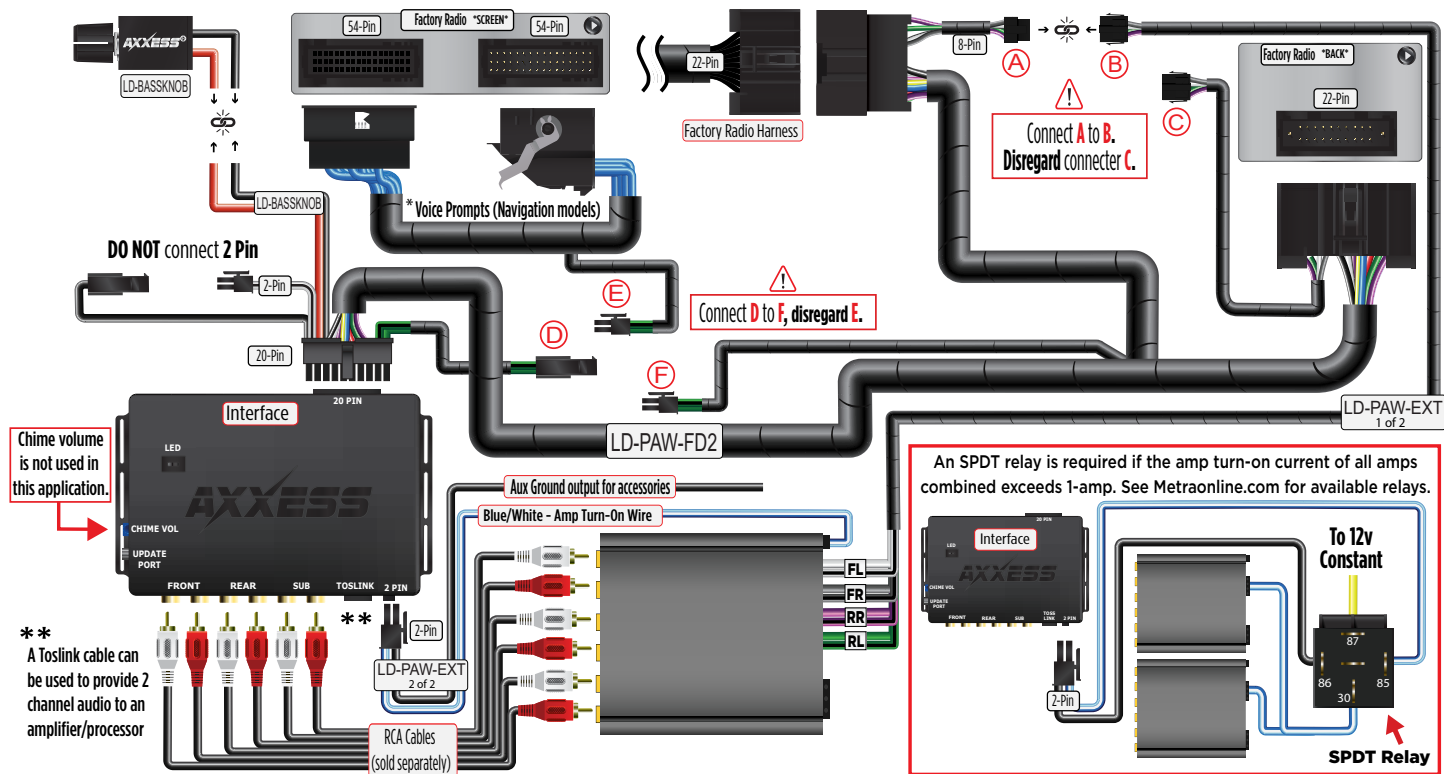
## Extension Harness:

1. Connect the included **Extension Harness** 8-pin harness "**B**" to the 8-pin harness "**A**" on the **vehicle T-harness** to connect factor speaker locations.
2. Connect the end of the **Extension Harness** to the aftermarket amplifier.

\* For amplified models the amp must be bypassed/unplugged. Refer to [www.MetraOnline.com](http://www.MetraOnline.com) for the vehicle specific amplifier bypass harness.

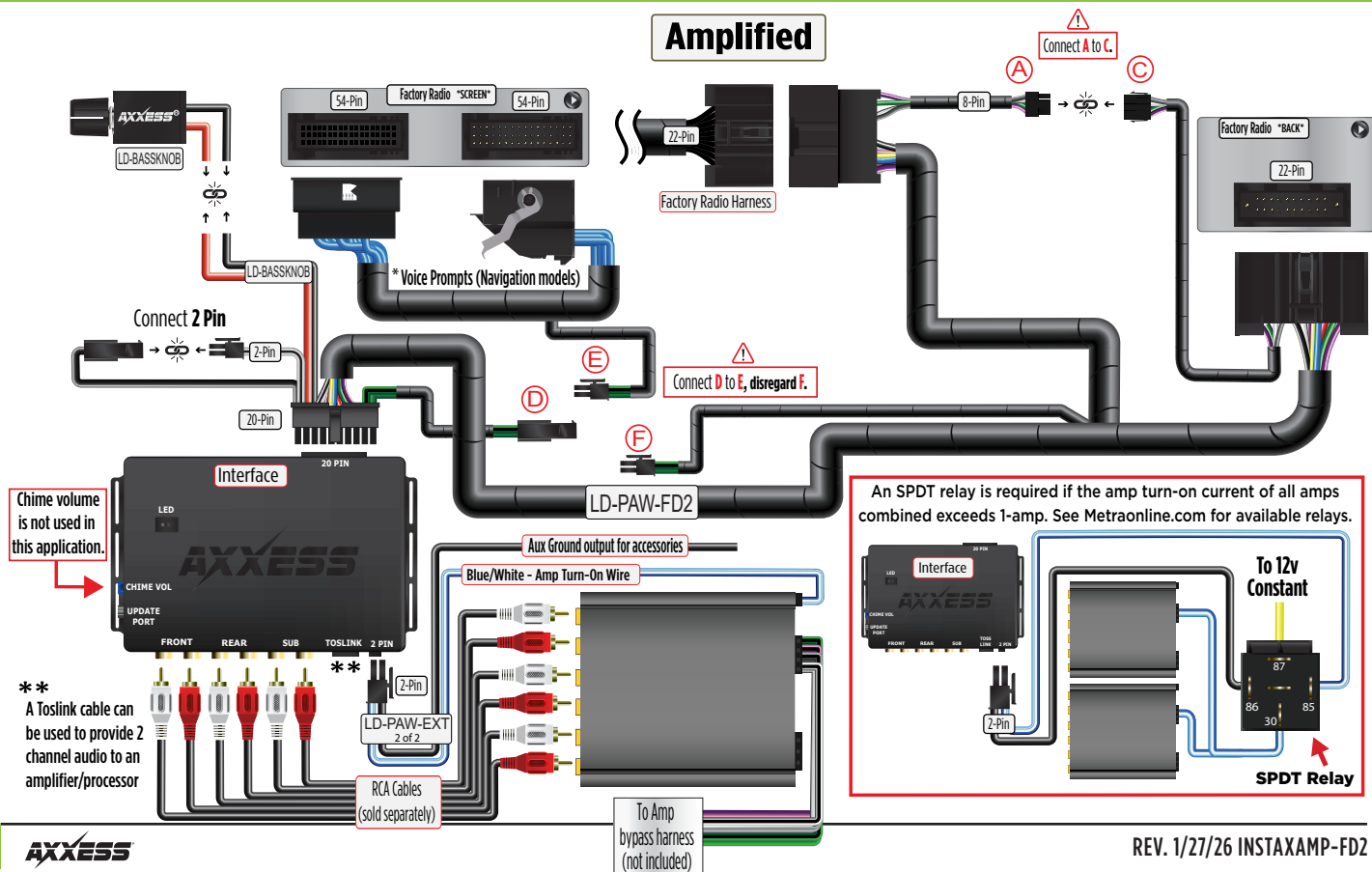
## ADDING AMPLIFIER/AMPLIFIERS TO A FACTORY SYSTEM

### Non-amplified





# ADDING AN AMPLIFIER/AMPLIFIERS TO A FACTORY SYSTEM





[illegible]



## TROUBLESHOOTING

### Final LED Feedback

At the end of programming the LED will turn **Solid Green** which indicates programming was successful. If the LED didn't turn **Solid Green**, reference the list below to understand which programming section the problem may stem from.

Feedback Light	Condition/Status
Solid Green	All Good
Solid Red	Missing Can Frames
Blink Red	Clipping Output
Green/Red	Missing Adv. (Comm Frames)

Scan QR Code



Further troubleshooting steps and information can be located at:

[axxessinterfaces.com/product/AXAMP-FD2](https://axxessinterfaces.com/product/AXAMP-FD2)

Having difficulties? We're here to help.



Contact our Tech Support line at:

**386-257-1187**



Or via email at:

[techsupport@metra-autosound.com](mailto:techsupport@metra-autosound.com)

### Tech Support Hours (Eastern Standard Time)

Monday - Friday: 9:00 AM - 7:00 PM

Saturday: 10:00 AM - 5:00 PM

Sunday: 10:00 AM - 4:00 PM



**Metra recommends MECP  
certified technicians**