



Stop/Start Override Interface

Fits Select Ford Models **2019-UP**

INTERFACE FEATURES

- Allows the override of the STOP/START engine feature
- The factory STOP/START button can resume the STOP/START feature
- Can be used with either a factory or aftermarket radio
- Vehicle type configured through the Axxess Updater app, available for smartphones and tablets
- Simple plug-n-play installation, no wiring required
- U.S. Patent 10,844,821, U.S. Patent 11,686,281

Product Info



INTRODUCTION

The **AXSSO-FD2** is designed to disengage the STOP/START feature of the vehicle and keep that feature disengaged, even after the key has been cycled. The AXSSO-FD2 will work with either an aftermarket radio or a factory radio. No programming required!

APPLICATIONS

Ford

Bronco Sport	2021	Ranger	2019-2021
Escape	2020-2021	Transit	2020-2021
Explorer	2020-2021	Transit Connect	2019-2021

TABLE OF CONTENTS

Programming.....	2
Connections.....	3
Operation.....	4

INTERFACE COMPONENTS

- AXSSO-FD2 interface
- AXSSO-FD2 harness

TOOLS & INSTALLATION ACCESSORIES REQUIRED

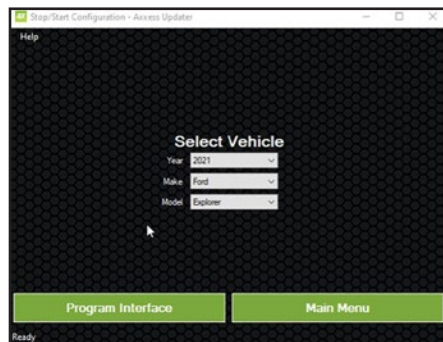
- Zip ties • Cutters (for zip ties)
- USB Micro-B cable
(Axxess part number **AXUSB-MCBL**)

ATTENTION: With the key out of the ignition, disconnect the negative battery terminal before installing this product. Ensure that all installation connections are secure before cycling the ignition to test this product.
NOTE: Refer to the instructions included with the aftermarket radio.

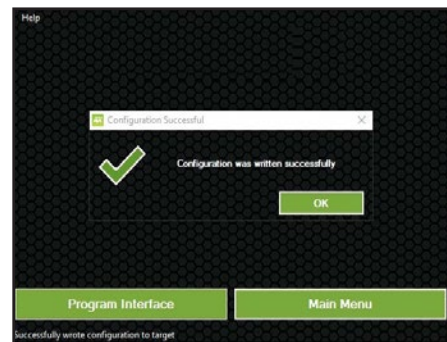
PROGRAMMING



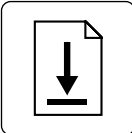
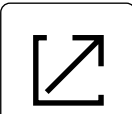
(Figure A)





(Figure B)



(Figure C)

1.  Download and install the **Axxess Updater** software program from: axcessinterfaces.com/resources/updater-software
2.  Connect the micro-B USB cable (sold separately) to the computer and **AXSSO-FD2** interface. Open the **Axxess Updater** software program and wait until the word **Ready** is shown in the bottom left of the screen. Select **Stop / Start**. (Figure A)

3.  On the next screen that opens, select the year, make, and model of the vehicle, then press **Program Interface**. (Figure B)
4.  When the **Configuration Successful** box pops up, the programming process is complete. (Figure C)

Continue to Installation

INSTALLATION

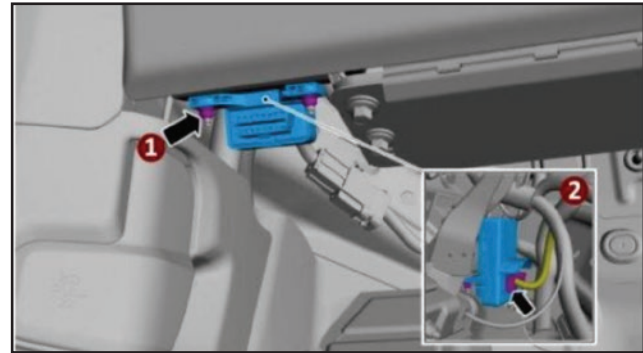
These vehicles will connect at the OBD2 connector, located under the driver's side dashboard:

Ford

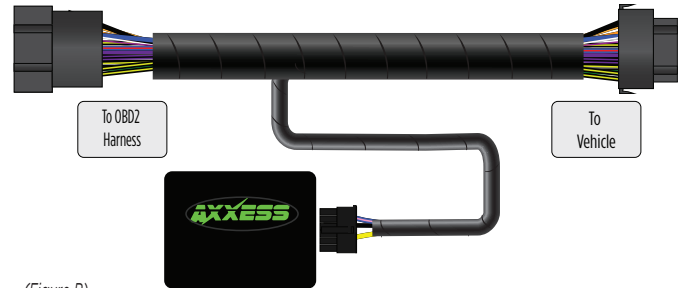
Bronco Sport	2021
Escape	2020-2021
Explorer	2020-2021
Ranger	2019-2021
Transit	2020-2021
Transit Connect	2019-2021

From the OBD2 connector in the dash:

1. Disconnect the factory OBD2 connector from under the dash. (Figure A)
2. Plug the AXSSO-FD2 harness into the OBD2 connector.
3. Connect the AXSSO-FD2 to the wiring harness in the dash.
4. Plug the AXSSO-FD2 harness into the AXSSO-FD2 interface.
5. Zip tie the harness securely under the dash to avoid it from sagging. (Figure B)



(Figure A)



(Figure B)



OPERATION

Re-engaging the STOP/START feature

1.



Press the factory STOP/START button to re-engage the STOP/START feature.

Having difficulties? We're here to help.



Contact our Tech Support line at:

386-257-1187



Or via email at:

techsupport@metra-autosound.com

Tech Support Hours (Eastern Standard Time)

Monday - Friday: 9:00 AM - 7:00 PM

Saturday: 10:00 AM - 5:00 PM

Sunday: 10:00 AM - 4:00 PM



**Metra recommends MECP
certified technicians**