



# AXAC-GM2

## INSTALLATION INSTRUCTIONS



## Camera Data Interface w/Pre-Wired Harness Fits Select Buick/Chevrolet/GMC Models\* 2014-2020

### INTERFACE FEATURES

- Add multiple CAN-activated cameras with 4 camera inputs
- Includes AXAC camera interface and vehicle-specific harness
- Programmable 12-volt 5-amp switched output (configured through the Axxess Updater program)
- Reverse signal trigger generated via CAN Bus communication of the vehicle
- Turn signal trigger generated via CAN Bus communication of the vehicle
- 4 programmable camera control wires (configured through the Axxess Updater program)
- Can also be manually controlled and used along with an aftermarket radio
- Rear Video Assistant (RVA) option can be used to keep a camera active
- VSS (Vehicle Speed Sense) input and output
- Micro "B" USB updatable

### APPLICATIONS LD-GMLVDS2 7" (IOB)

Buick	Chevrolet	
with IOB 7" MyLink Touchscreen	with IOB 7" MyLink Touchscreen	
Enclave ..... 2018-2019	Colorado ..... 2015-2018	Silverado 2500 / 3500 ..... 2019
LaCrosse ..... 2014-2019	Impala ..... 2014-2018	Suburban ..... 2015-2020
Regal ..... 2014-2017	Silverado ..... 2014-2019	Tahoe ..... 2015-2020

GMC w/IOB 7" MyLink Touchscreen
Acadia ..... 2017-2019
Canyon ..... 2015-2018
Sierra ..... 2014-2018
Sierra Limited ..... 2019
Yukon / XL ..... 2015-2020

### TABLE OF CONTENTS

Connections.....	2-3
AXAC-GM2 Layout .....	4
Add Cam Configuration from Axxess Updater .....	5-6

\* Intended for 7" inch screens, the GM LVDS2 interface will allow your factory screen to enable a Camera or add multiple cameras to your factory screen. It can also be used as a "Baby Monitor" or "Monitor for your Trailer Hitch"

### REQUIRED ITEMS

Update Cable: AXUSB-MCBL (sold separately)  
AXXESS Updater Program

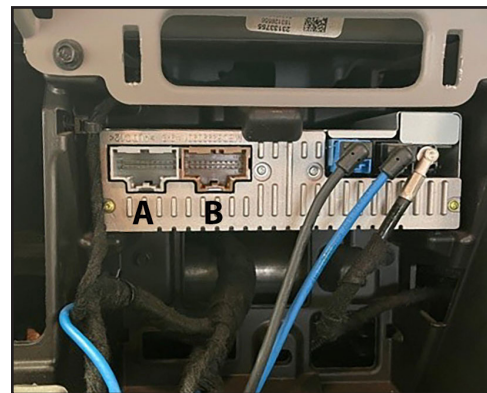
Visit [AxxessInterfaces.com](http://AxxessInterfaces.com) for more detailed information about the product and up-to-date vehicle specific applications.

**ATTENTION:** With the key out of the ignition, disconnect the negative battery terminal before installing this product. Ensure that all installation connections, especially the air bag indicator lights, are plugged in before reconnecting the battery or cycling the ignition to test this product.

**NOTE:** Refer also to the instructions included with the aftermarket accessory before installing this device.

## CONNECTIONS

### AXAC-GM2 CONNECTIONS



1. Disconnect the factory Gray 20-pin connector that plugs into the factory **Radio Control Module**.
2. Connect the **(A) LD-GMLVDS2-AC** and **(B) LD-GMLVDS3-AC** into the factory connector that was removed and connect the other end into the **Radio Control Module**.
3. Disconnect the LVDS connection from the factory screen, connect that cable into the LVDS input side of the board.
4. Connect the LVDS output side of the interface into the factory screen.
5. Connect the 6-pin connector from the **LD-GMLVDS-AC2** to the 6-pin from the **(B) LD-GMLVDS3-AC** harness.
6. Connect the 4-pin connector from the **LD-GMLVDS-AC2** to the 4-pin from the **(A) LD-GMLVDS2-AC** harness.

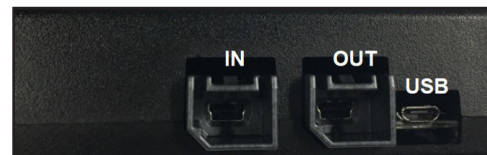
## CONNECTIONS CONT.



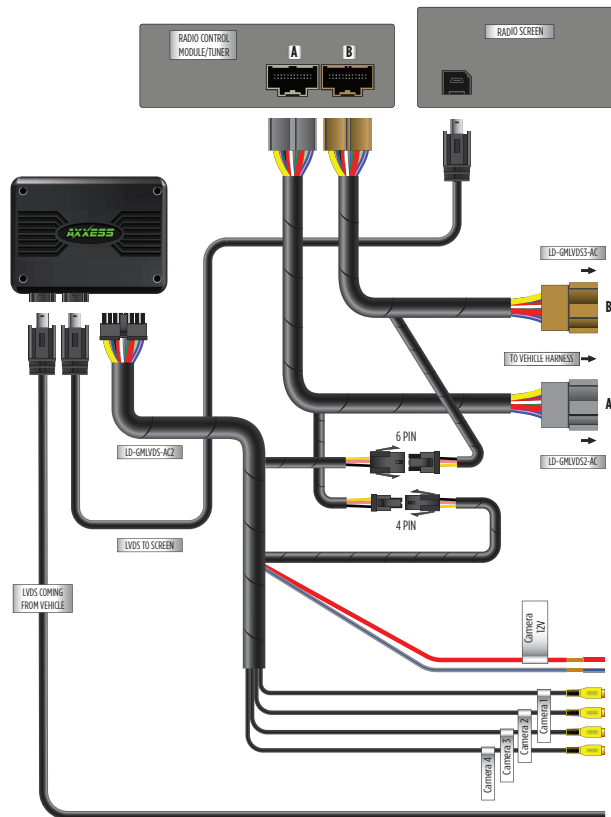
**16-pin Connector:** Plugs into interface

**Gray/Blue wire:** Is the control wire that can be configured to accept a Positive or Negative input, that can be used to trigger the video output.

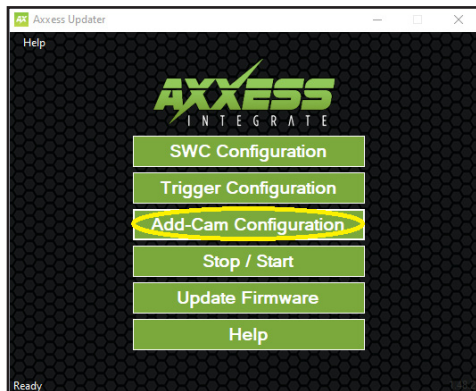
**Red wire\*:** Will provide 12v(5a) as long as the vehicle is awake for the aftermarket cameras.



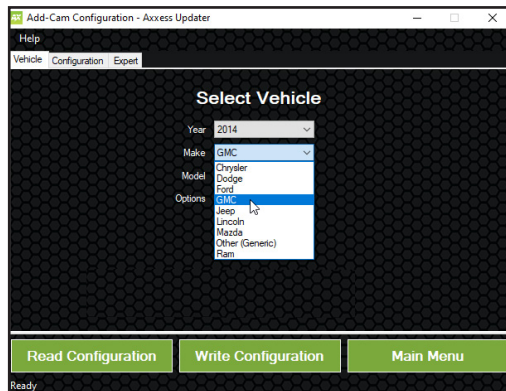
## AXAC-GM2 HARNESS LAYOUT



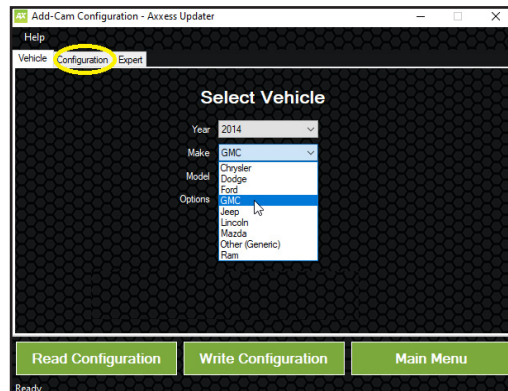
## ADD-CAM CONFIGURATION FROM THE AXCESS UPDATER



- Enter the ADD-CAM Configuration



- Select the vehicle type the interface is being installed in



- Once vehicle has been selected, select the configuration tab.  
You can now configure your cameras

<https://axcessinterfaces.com/resources/updater-software>

## ADD-CAM CONFIGURATION-AXXESS UPDATER

**4 Female Video inputs** Here are the options that can be chosen for each input:

### Camera 1

- **Disable:** Will turn off input
- **Reverse:** Will activate when the vehicle is in reverse (**Reverse can only be configured on Camera 1**)
- **Left Blinker:** Will activate Input when left turn signal is activated
- **Right Blinker:** Will activate input when right turn signal is activated
- **Control 1 Positive\*:** Activates Camera 1 with 12v positive trigger
- **Control 1 Negative\*:** Activate Camera 1 with Negative Ground trigger

### Camera 2

- **Disable:** Will turn off input
- **Left Blinker:** Will activate input when left turn signal is activated
- **Right Blinker:** Will activate input when right turn signal is activated
- **Control 1 Positive\*:** Activates Camera 2 with 12v positive trigger
- **Control 1 Negative\*:** Activate Camera 2 with Negative Ground trigger

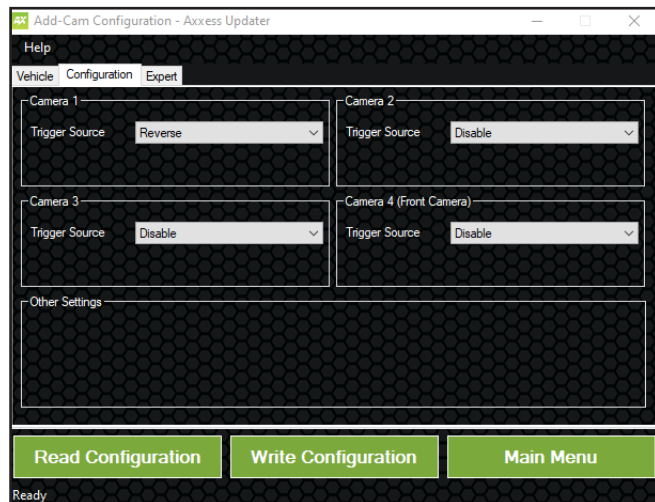
### Camera 3

- **Disable:** Will turn off input
- **Left Blinker:** Will activate input when left turn signal is activated
- **Right Blinker:** Will activate input when right turn signal is activated
- **RVA (Rear Video Assistant) Positive or Negative trigger:** Activates viewing of Trailer Cameras or Child monitoring

### Camera 4

- **Disable:** Will turn off input
- **Left Blinker:** will activate input when left turn signal is activated
- **Right Blinker:** will activate input when right turn signal is activated
- **Control 1 Positive\*:** Activates Camera 4 with 12v positive trigger
- **Control 1 Negative\*:** Activates Camera 4 with Negative Ground trigger
- **Auto (Reverse to Drive):** will activate once it sees a sequence of reverse then drive

**NOTE:** The **Red** wire provides 5 amps (it's recommended to use an SPDT automotive relay when using that line to power up multiple cameras). Use **Metra part number E-123** (sold separately) for best results.



**LEGEND:** \* Not available if RVA is selected as a trigger source for input 3

**Note:** The AXAC-GM2 monitors the vehicle's speed, preventing the use of cameras while the vehicle is in motion. Example: When approaching a stop and the turn signal is activated, the camera will not display unless the vehicle is moving greater than 3MPH. (**Cut off point is from 8-15mph**)





## AXAC-GM2

INSTALLATION INSTRUCTIONS



Having difficulties? We're here to help.



Contact our Tech Support line at:

**386-257-1187**



Or via email at:

[techsupport@metra-autosound.com](mailto:techsupport@metra-autosound.com)

### Tech Support Hours (Eastern Standard Time)

Monday - Friday: 9:00 AM - 7:00 PM

Saturday: 10:00 AM - 5:00 PM

Sunday: 10:00 AM - 4:00 PM



**Metra recommends MECP  
certified technicians**