



INTERFACE COMPONENTS

- AXAC-CH8 interface
- AXAC-CH8 interface harness (LD-AXAC-CH7)
- AXAC-CH8 vehicle harness (LD-AC-CH8)

APPLICATIONS

Dodge Durango with Uconnect[®] 5 (10.1 inch touchscreen) 2023-Up
Jeep Wrangler with Uconnect[®] 5 (12.3 inch touchscreen) 2023-Up
Ram Ram with Uconnect[®] 5 (12.0 inch touchscreen) 2023-Up

Camera Interface with Pre-Wired Harness Fits Select Chrysler Models **2023-Up***

*Vehicles equipped with Uconnect[®] 5 (Touchscreens 10.1, 12 and 12.3)

Visit AxxessInterfaces.com for more detailed information about the product and up-to-date vehicle specific applications

INTERFACE FEATURES

- Add multiple CAN-activated cameras with 4 camera inputs
- Programmable 12-volt 5-amp switched output (configured through the Axxess Updater program)
- Reverse signal trigger generated via CAN bus communication of the vehicle
- Turn signal trigger generated via CAN bus communication of the vehicle

Continued on the next page

MetraOnline.com may be used to assist with dash assembly instructions. Simply enter your Year, Make, Model vehicle into the vehicle fit guide and look for the Dash Kit Installation Instructions.

www.Metraonline.com



TABLE OF CONTENTS

Introduction	2
Features cont.	2
Required tools & items.....	2
Configuration	2-4
Connections.....	5
Rebooting the Radio	5
Installation	6
Harness Installation	
LD-AXAC-CH7 & LD-AC-CH8.....	7
Programming.....	8

ATTENTION: With the key out of the ignition, disconnect the negative battery terminal before installing this product. Ensure that all installation connections, especially the air bag indicator lights, are plugged in before reconnecting the battery or cycling the ignition to test this product.

NOTE: Refer also to the instructions included with the aftermarket radio.

INTRODUCTION

The **AXAC-CH8** is a camera switching interface that provides:

- A front camera, and/or side cameras that can be added to the factory radio.
- Up to (3) additional camera inputs to the factory radio, while still retaining the factory camera.
- Automatic camera function, no human interaction is required, unless desired.
- Up to (4) cameras, if the vehicle doesn't come equipped with a backup camera.

Note: Axxess recommends cameras from the **iBEAM** product line for best results.

FEATURES CONT.

- One programmable camera control wire (configured through the Axxess Updater program)
- Can also be manually controlled and used along with an aftermarket radio
- VSS (Vehicle Speed Sense) input and output
- Micro "B" USB updatable

REQUIRED TOOLS & ITEMS

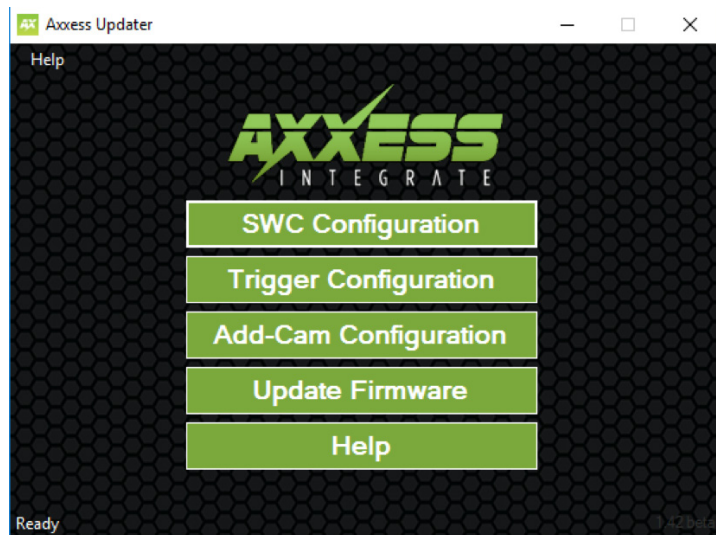
TOOLS REQUIRED

- Crimping tool and connectors, or solder gun, solder, and heat shrink
- Tape
- Wire cutter
- Zip-ties

ITEMS REQUIRED

- Update Cable: AXUSB-MCBL (sold separately)
- Axxess Updater Program

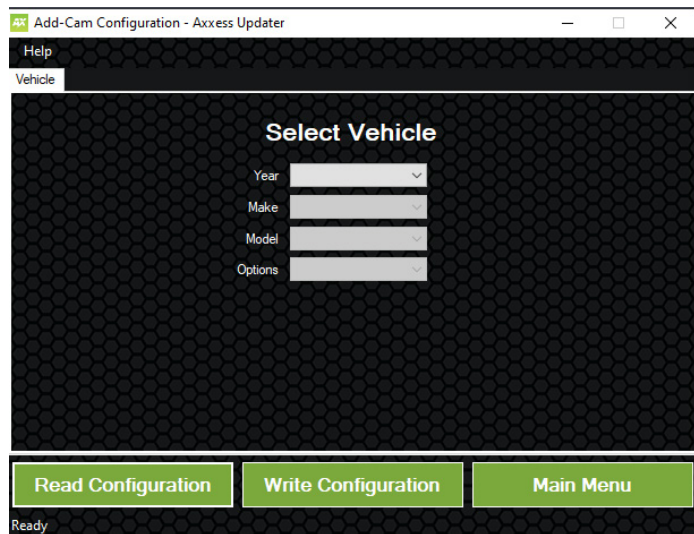
CONFIGURATION



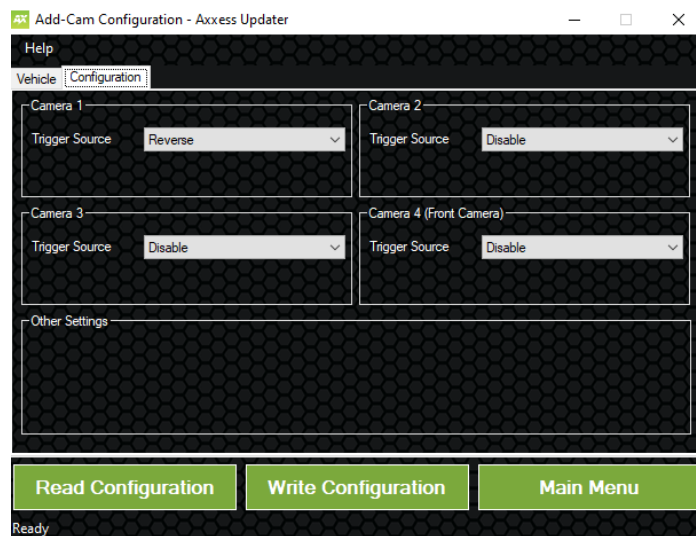
1. Download and install the Axxess Updater available at: AxxessInterfaces.com
2. Connect the AXUSB-MCBL update cable (sold separately) between the interface and the computer. The cable will connect into the micro-B USB port in the interface.
3. Open the Axxess Updater and wait until the word Ready is listed in the bottom left of the screen.
4. Select **Add-Cam Configuration**.

Continued on the next page

CONFIGURATION (CONT.)



5. Select the vehicle in the drop down list. A tab labeled **Configuration** will appear after the vehicle has been selected.



6. Under **Configuration**, configure the (4) video trigger inputs to the desired settings.*
7. Once all selections have been configured, press **Write Configuration** to save the settings.
8. Unplug the update cable from the interface and computer.
- * Refer to the following page for more information.

Continued on the next page

Video trigger legend

- **Disable** (will turn off the input)
- **Backup Camera** (dedicated backup camera)
- **Left Blinker** (will be used for activation)
- **Right Blinker** (will be used for activation)
- **Control 1** (positive trigger activation)
- **Control 1** (negative trigger activation)
- **Auto (Reverse -> Drive)** will activate once that sequence is seen (only available for video trigger 4)

Video trigger description

- **Reverse Camera:** Dedicated by default to Video Trigger 1. Will activate the backup camera while the vehicle is in reverse.
- **Left Blinker:** Activation of the left turn signal will activate the left camera.
- **Right Blinker:** Activation of the right turn signal will activate the right camera.
- **Auto (Reverse -> Drive):** Available only for Video Trigger 4, when installing a front camera. With this feature selected, the camera will activate automatically once a reverse-then-drive sequence is seen from the vehicle. Example of this scenario would be while parallel parking the vehicle. As an alternative, a control wire can be used instead to manually activate the camera.
Note: Auto (Reverse -> Drive) will disable the camera once (15) MPH is reached. A control wire activated will also disable the camera.
Note: If the control wire is activated while driving, the camera will activate and deactivate during stop-and-go traffic.
- **Control 1 (positive or negative) trigger activation wire:** Can be used as a positive or negative trigger to manually activate a camera via a toggle switch, or similar device.

CONNECTIONS

For models with a factory backup camera:

The camera's LVDS signal will need to be interrupted and reconnected to the corresponding input/output from the interface.

- Refer to **Camera Input** section on page 7 for input connection.
- Connect the RCA jack from the **LD-AC-CH8 vehicle harness** labeled "Camera input", to the RCA jack from the **LD-AXAC-CH7 interface harness** labeled "Camera output".
- Connect the RCA jack from the **LD-AC-CH8 vehicle harness** labeled "Camera output", to the RCA jack from the **LD-AXAC-CH7 interface harness** labeled "Camera 1".
- Connect the **Red** wire from the **LD-AXAC-CH7 interface harness** labeled "Camera 12V", to the power wire from the aftermarket backup camera.

Analog control trigger wires:

The (optional) analog control wire can be used with either a negative or positive trigger, depending on how it is configured in the Axxess Updater. This wire will only be used for manual control of the camera, otherwise disregard the wire.

Control Wire	Wire Color
Control 1	Gray/Blue

REBOOTING STEPS



Rebooting the Radio

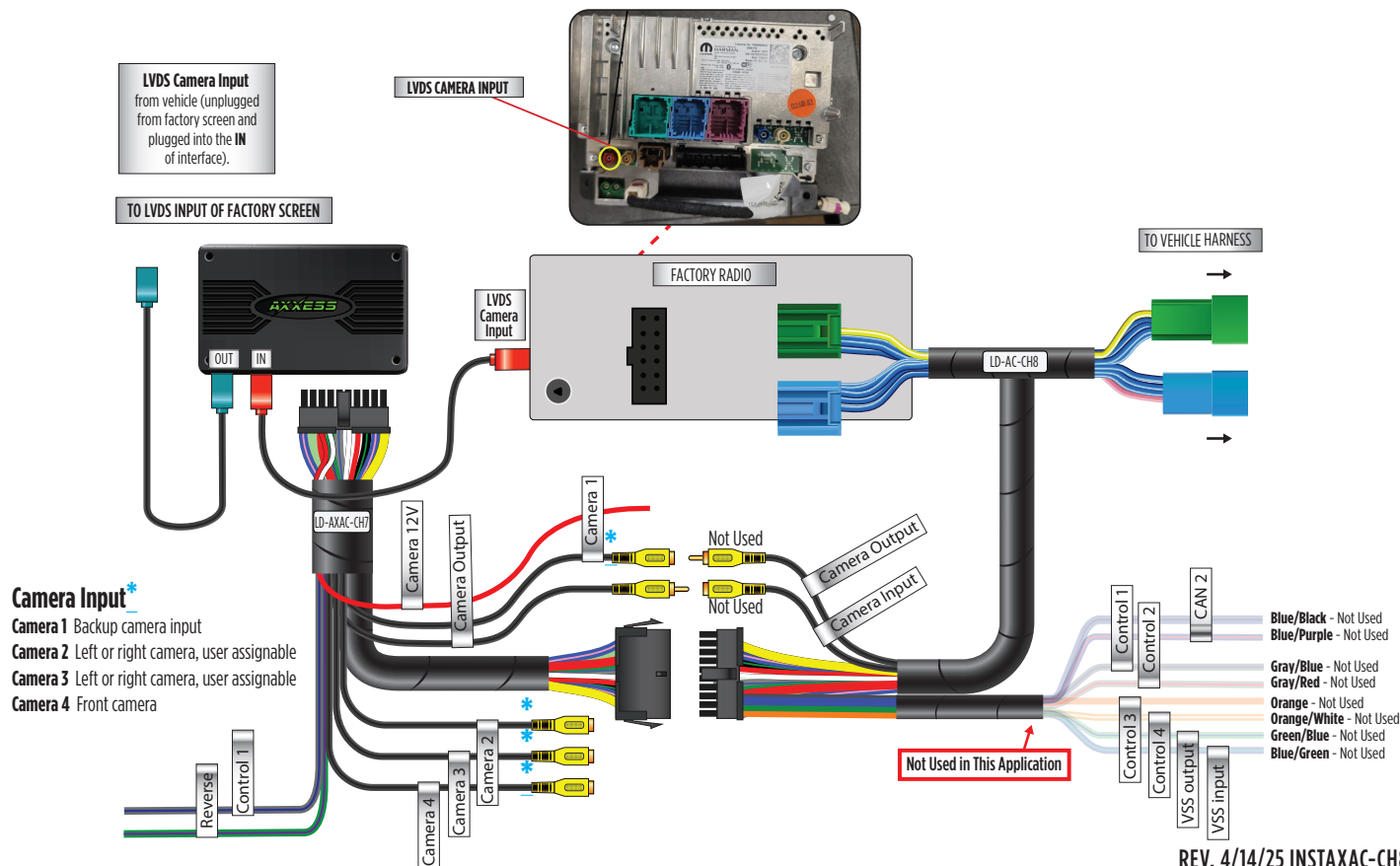
1. Turn Key/Press **Push to Start** to the ACC position (don't press brake on "Push to Start" vehicles).
2. Press the **PWR/MUTE** button and **Tune/Enter** button for 10-16 seconds until the radio reboots.
3. Let go once the radio reboots, you have now successfully rebooted your factory radio.

INSTALLATION

With the ignition cycled off:

1. Remove the harness from the factory radio, then install the **LD-AC-CH8 vehicle harness** in between.
2. Connect the **LD-AC-CH8 vehicle harness** to the **AXAC-CH8 interface harness**.
3. Connect the **LD-AXAC-CH7 interface harness** to the **AXAC-CH8 interface**.
4. Make sure the camera(s) is connected to the appropriate input.
5. Make sure the interface has been configured beforehand as shown in the **Configuration** section. Failure to configure the interface will result in the interface not functioning properly.

HARNESS INSTALLATION: LD-AXAC-CH7 & LD-AC-CH8





AXAC-CH8

INSTALLATION INSTRUCTIONS



PROGRAMMING

For models with a factory backup camera:

1. Cycle the ignition on and wait until the LED (located between LVDS INPUTS on interface) in the interface comes on.

Note: If the LED doesn't come on within a few seconds, yet blinks instead, turn the key to the off position, disconnect the interface, check all connections, reconnect the interface, and then try again.

2. Test all functions of the installation for proper operation.

Having difficulties? We're here to help.



Contact our Tech Support line at:

386-257-1187



Or via email at:

techsupport@metra-autosound.com

Tech Support Hours (Eastern Standard Time)

Monday - Friday: 9:00 AM - 7:00 PM

Saturday: 10:00 AM - 5:00 PM

Sunday: 10:00 AM - 4:00 PM



**Metra recommends MECP
certified technicians**