



# AXDSPX-A2B1

## INSTALLATION INSTRUCTIONS



## A2B/DSP Data Interface with Amplifier Bypass Harness

Fits Select Ford Models **2017-2020\***

\*with Sony A2B amplifier

Visit [MetraOnline.com](http://MetraOnline.com) and [AxxessInterfaces.com](http://AxxessInterfaces.com) for harness and interface options.

### INTERFACE COMPONENTS

- AXDSPX-A2B1 interface
- AXDSPX-A2B1 harness
  - AXDSPX-A2B1 interface harness (male connectors: 12-pin, 16-pin)
  - Amplifier bypass harness (female connectors: 16-pin, 16-pin)
- Radio T-harness
- AXBK-1 Bass knob

### TOOLS REQUIRED

- Crimping tool and connectors, or solder gun, solder, and heat shrink
- Tape
- Wire cutter
- Zip ties

### APPLICATIONS

Visit [AxxessInterfaces.com](http://AxxessInterfaces.com) for current application list

### TABLE OF CONTENTS

AXDSPX-A2B1 Features .....	2
Connections .....	3-4
Installation .....	5
LED Feedback .....	6

#### Download the AX-DSP-XL App

Android® 9 or higher



iOS® 12.1 or higher



[Metraonline.com](http://Metraonline.com)



For **Dash Disassembly Instructions**, refer to [metraonline.com](http://metraonline.com). Enter the year, make, and model of the vehicle in the **Vehicle Fit Guide** for **Radio Install kits**.

**ATTENTION:** With the key out of the ignition, disconnect the negative battery terminal before installing this product. Ensure that all installation connections, especially the air bag indicator lights, are plugged in before reconnecting the battery or cycling the ignition to test this product.

**NOTE:** Refer also to the instructions included with the aftermarket radio.

## AXDSPX-A2B1 FEATURES

### VEHICLE-SPECIFIC FEATURES

---

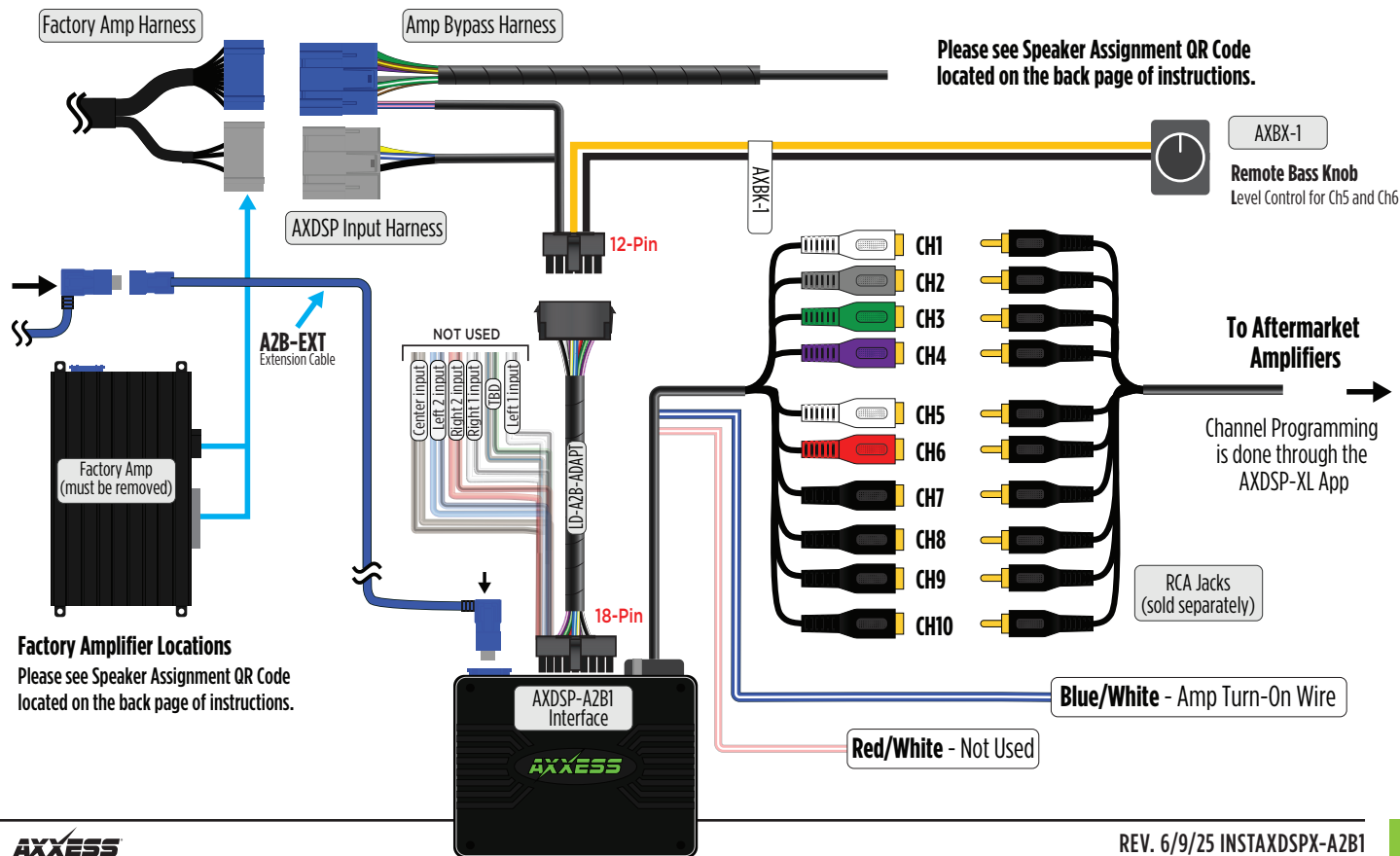
- Designed for select vehicles with a Sony® A2B amplifier
- Includes A2B data interface with built-in AXDSP-X technology, vehicle-specific T-harness, and an amplifier bypass harness
- See AXDSP-X for specific retained features, if your vehicle is equipped
- Factory amplifier does not need to be retained
- Chimes and voice prompts use aftermarket amplifier
- Install location: At the factory amplifier
- Micro “B” USB updatable

### AXDSP-X DATA INTERFACE FEATURES

---

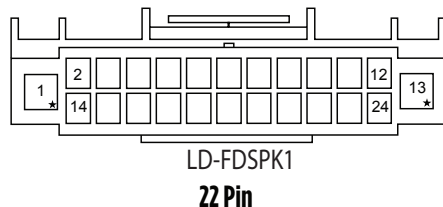
- Selectable 31-band Graphic EQ or 5-band parametric EQ on each channel with high pass, low pass, and bandpass filters
- 6 inputs and 10 individually assignable outputs
- Selectable slope (12, 24, 36, or 48db per octave)
- Selectable Graphic or Parametric EQ
- Independent equalization on each of the 10 outputs
- Each channel can be delayed independently up to 10 ms
- Clipping detection and limiting circuits
- Bass knob included
- Retains OE voice prompts (SYNC®) if vehicle is equipped
- Settings adjusted wirelessly in the free AX-DSP-XL app available for smartphones and tablets
- To be used with factory radios
- Read, write, and store configurations for future recall
- Password protect feature available in the app

# CONNECTIONS TO BE MADE AT THE FACTORY AMPLIFIER'S LOCATION



## CONNECTIONS TO BE MADE AT THE FACTORY RADIO'S LOCATION (CONT)

**Wire Insertion View**  
Viewed from where the wires go into the connector



Interface kit includes a T-harness to tap into the speakers powered from the vehicle radio chassis

**Factory Radio Harness**

**NOTE:** For Factory Amplifier Locations, please see **Speaker Assignment QR Code** located on the back page of these instructions.

**Run speaker wires to aftermarket amplifier(s)**

**Located Behind Dash**

**Factory Radio Chassis**

**T-Harness  
Installation  
Location**

**To OE Speakers**

# INSTALLATION

1. Locate the factory amp\*, unplug all connectors, then remove the amp.
2. Install the **AXDSPX-AZB1 harness** and make all necessary connections, but leave the amp turn-on wire disconnected.  
**Note:** Ensure the USB connector from the factory amp is connected to the AXDSPX-AZB1.
3. Plug the 12-pin and 16-pin connectors from the **AXDSPX-AZB1 harness** into the **AXDSPX-AZB1 interface**.
4. Download and install the **AX-DSP-XL** app for your smart device.
5. Open the app and follow the instructions on the **Bluetooth® Connection** tab to pair the mobile device to the AXDSPX-AZB1. (Figure A)

6. Scroll to the **Configuration** tab then select the vehicle type. Press the **Lock Down\*\*** button to save the configuration. (Figure B)
7. Connect the amp turn-on wire from the **AXDSPX-AZB1 harness**.
8. Click the **Identify** button to confirm that the **AXDSPX-AZB1** is connected properly. If so, a chime will be heard from the front left speaker or gauge cluster. Test all functions of the installation for proper operation.
9. Adjust the DSP settings in the app as desired. Refer to the instructions under the **Setup Instructions** tab, or online at [Axxessinterfaces.com](http://Axxessinterfaces.com) for an explanation of each tab in the app.

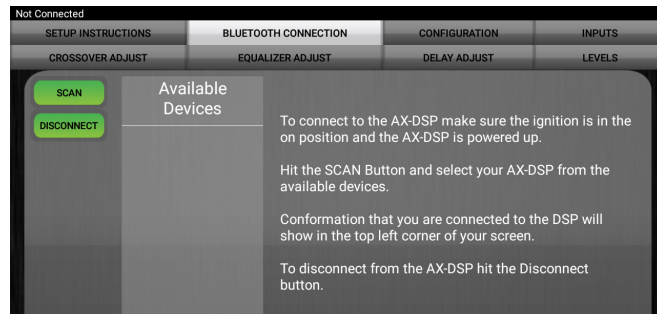
**Note:** In these vehicles the factory radio powers some speakers.

**Escape:** Front tweeters / Center channel

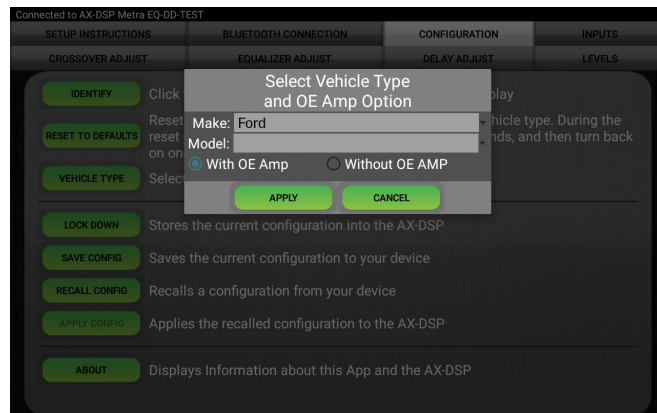
**Fusion:** Front tweeters / Front center channel / Rear center channel

\***Amplifier Locations:** **Escape:** Behind the left rear quarter panel    **Fusion:** Behind the right rear quarter panel

\*\* Anytime the interface is locked down the key must be cycled off then back on.



(Figure A)



(Figure B)

## A2B LED FEEDBACK

### LED FEEDBACK

1 blink every 5 seconds = All good

2 blinks every 5 seconds = No A2B signal

3 blinks every 5 seconds = No CAN communication

[illegible]



# AXDSPX-A2B1

INSTALLATION INSTRUCTIONS

Visit [AxxessInterfaces.com](https://AxxessInterfaces.com) for more detailed information about the product and up-to-date vehicle specific applications

Speaker Assignment



Having difficulties? We're here to help.



Contact our Tech Support line at:

**386-257-1187**



Or via email at:

[techsupport@metra-autosound.com](mailto:techsupport@metra-autosound.com)

### Tech Support Hours (Eastern Standard Time)

Monday - Friday: 9:00 AM - 7:00 PM

Saturday: 10:00 AM - 5:00 PM

Sunday: 10:00 AM - 4:00 PM



**Metra recommends MECP  
certified technicians**