



# AXDSPX-GM33

## INSTALLATION INSTRUCTIONS



### INTERFACE COMPONENTS

- AXDSPX-GM33 interface
- AXDSPX-GM33 output harness
- AXDSPX-GM33 vehicle T-harness
- LD-DSP-RPAD2 • Bass knob

### APPLICATIONS

Visit [axnessinterfaces.com](http://axnessinterfaces.com) for current application list

For **Dash Disassembly Instructions**, refer to [metraonline.com](http://metraonline.com). Enter the year, make, and model of the vehicle in the **Vehicle Fit Guide** for **Radio Install kits**.



## DSP Data Interface With Pre-Wired Harness

### Fits Select General Motors Models **2021-Up**

### INTERFACE FEATURES

- Designed for non-amplified systems
- Selectable 31-band Graphic EQ or 5-band parametric EQ on each channel with high pass, low pass, and bandpass filters
- 6 inputs and 10 individually assignable outputs
- Selectable slope (12, 24, 36, or 48db per octave)
- Selectable Graphic or Parametric EQ
- Independent equalization on each of the 10 outputs
- Each channel can be delayed independently up to 10 ms
- Chime control for GM vehicles
- Clipping detection and limiting circuits
- Bass knob included
- Retains OE voice prompts (OnStar®) if vehicle is equipped
- Retains factory chimes, including parking sensor and cross path detection alerts if vehicle is equipped
- Settings adjusted wirelessly in the free AX-DSP-XL app available for smartphones and tablets
- Easy behind the radio installation
- Can be used with factory and aftermarket radios
- Read, write, and store configurations for future recall
- Password protect feature available in the app
- Micro "B" USB updatable

### TABLE OF CONTENTS

Installation Options .....	2
Installation .....	2
Connections .....	3-4
Mobile App .....	5-6
Specifications .....	7

### TOOLS & INSTALLATION ACCESSORIES REQUIRED

- Crimping tool and connectors, or solder gun, solder, and heat shrink • Tape • Wire cutter
- Zip ties • Multimeter

#### Download the AX-DSP-XL App

Android™ 9 or higher



iOS® 12.1 or higher



**ATTENTION:** With the key out of the ignition, disconnect the negative battery terminal before installing this product. Ensure that all installation connections, especially the air bag indicator lights, are plugged in before reconnecting the battery or cycling the ignition to test this product.

**NOTE:** Refer also to the instructions included with the aftermarket accessory before installing this device.

## INSTALLATION OPTIONS

### Adding a sub to a factory system:

This feature offers the ability to add a subwoofer to a factory system. ([refer to page 3](#))

### Adding a full-range amp & sub to a factory system:

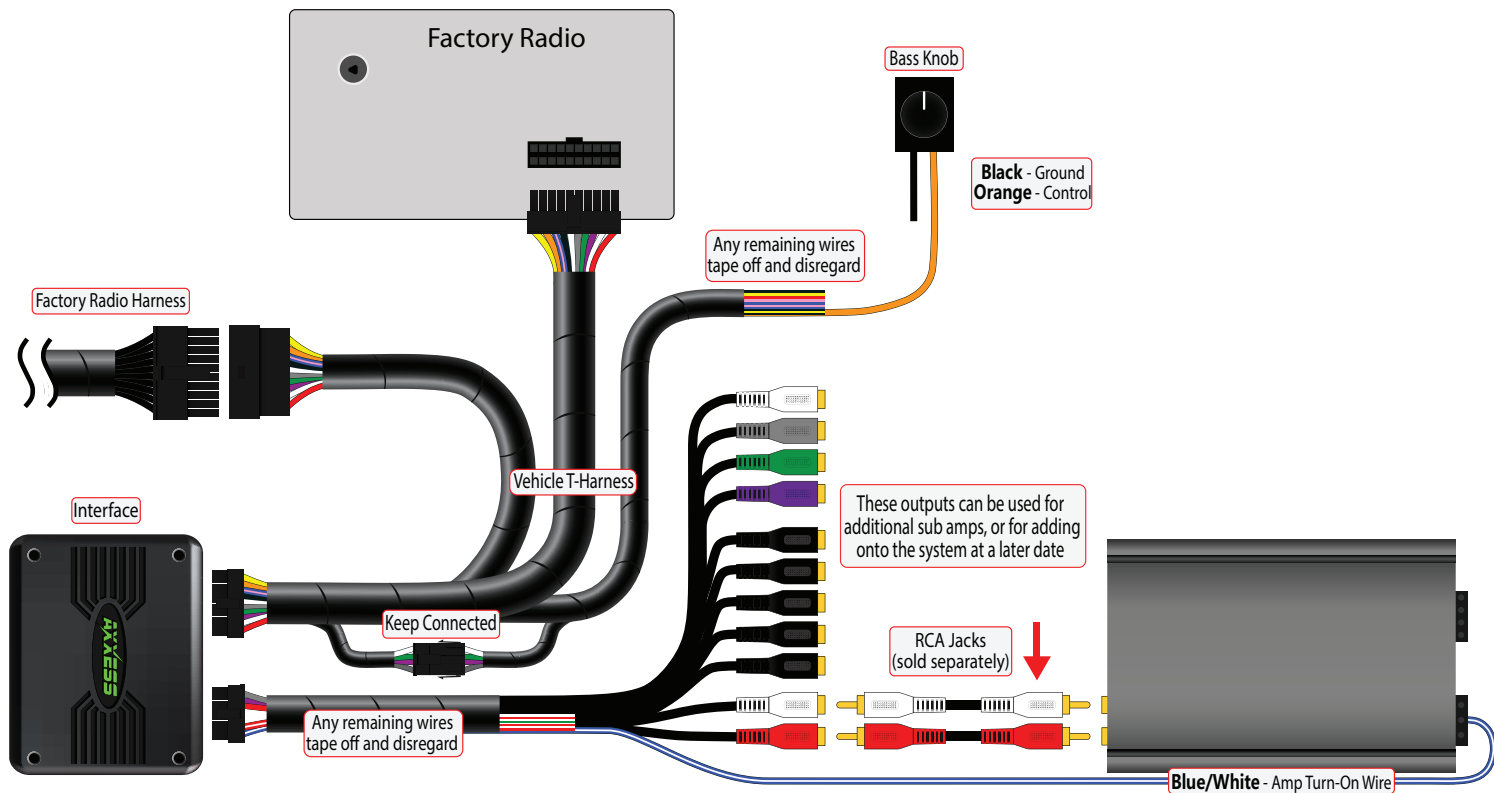
This feature offers the ability to add a full-range amp and sub to a factory system. ([refer to page 4](#))

**Note:** The interface provides a 12-volt 1-amp output to turn on aftermarket amp(s). If installing multiple amps, an SPDT automotive relay will be required if the amp turn-on current of all amps combined exceeds 1-amp. Use Metra part number [E-123](#) (sold separately) for best results.

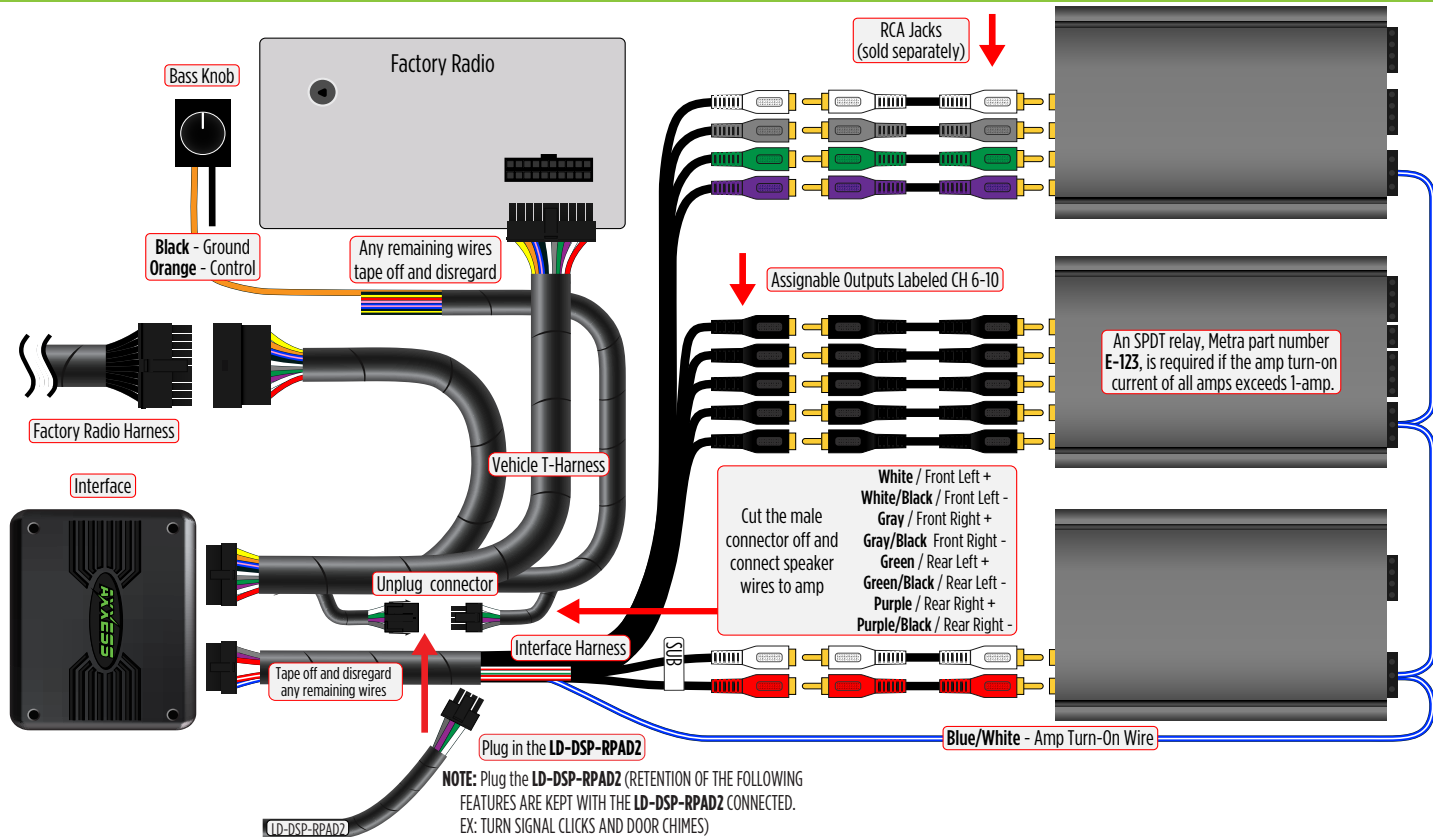
## INSTALLATION

1. Remove the factory radio <sup>†</sup>, then unplug all connectors.
  2. Install the **AXDSPX-GM33 vehicle T-harness** to the vehicle and make all necessary connections, but leave the amp turn-on wire disconnected.
  3. Plug the **AXDSPX-GM33 vehicle T-harness** to the **AXDSPX-GM33 interface**.
  4. Plug the **AXDSPX-GM33 interface harness** to the **AXDSPX-GM33 interface**.
  5. Download and install the **AX-DSP-XL app** for your smart device
  6. Open the app then select the **Bluetooth Connection** tab. Follow the instructions to pair the mobile device to the interface. Refer to [page 5](#) for more information.
  7. Scroll to the **Configuration** tab then select the vehicle type. Press the **Lock Down** <sup>‡</sup> button to save the configuration. Refer to [page 6](#) for more information.
  8. Connect the amp turn-on wire.
  9. Adjust the settings in the app as desired. Press the **Lock Down** <sup>‡</sup> button to save any new configurations.
- <sup>†</sup> Refer to [Metra online](#) for dash disassembly. If Metra makes a dash kit for the vehicle, disassembly will be within those instructions.
- <sup>‡</sup> Anytime the interface is locked down the key must be cycled off then back on

## ADDING A SUB TO A FACTORY SYSTEM



## ADDING A FULL-RANGE AMP & SUB TO A FACTORY SYSTEM



## QUICK SETUP STEPS THROUGH AXDSP-XL APP

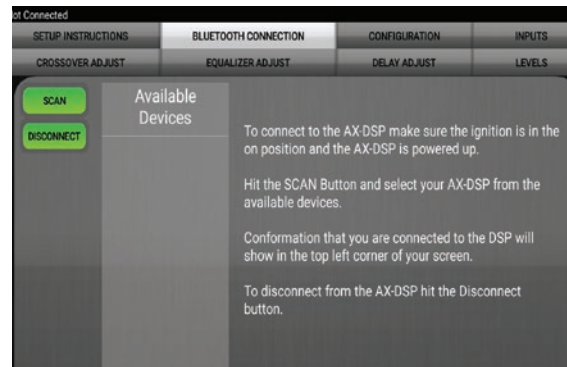
Android™ 9 or higher



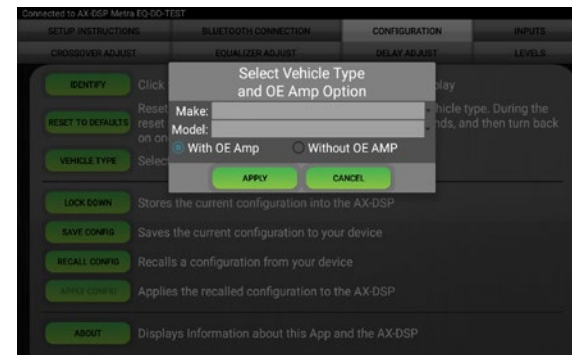
iOS® 12.1 or higher



1. Download and install the **AX-DSP-XL app** for your smart device.
2. Turn Vehicle Ignition on. Make sure the Remote Turn on lead is disconnected.
3. Open the app: Select **Bluetooth Connections** page.
  - Select **Scan**, all available AXDSP devices within range will be displayed. Select your AXDSP and hit connect. (Figure A)
4. Select the Configuration page.
  - Select **Vehicle Type** Icon
  - Select the Vehicle Make: \_\_\_\_\_ (Example: **GMC**)
  - Select the Vehicle's model: \_\_\_\_\_ (Example: **Sierra 1500**)
  - Select **With OE Amp**
  - Hit **Apply** (Figure B)
5. Make sure radio volume is all the way down.
6. Connect the amp turn-on wire from the **AXDSPX-GM33 T-harness** to the aftermarket amplifiers.



(Figure A)

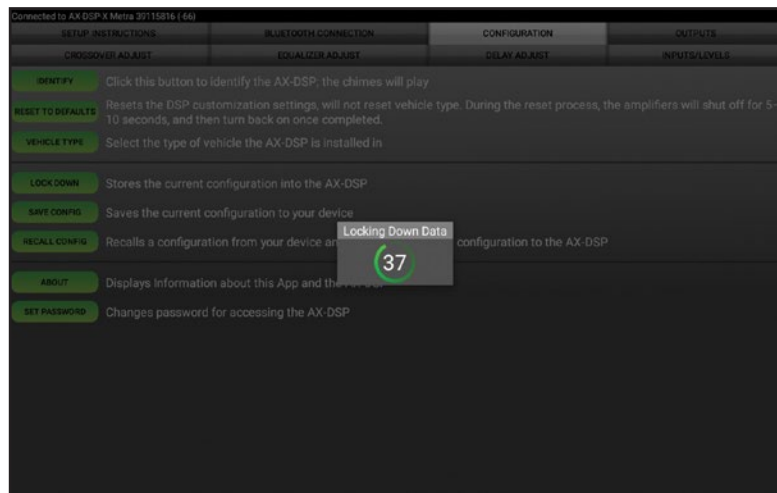


(Figure B)

## QUICK SETUP STEPS THROUGH AXDSP-XL APP (CONT.)

- From the **Configuration** page click the **Identify** button to confirm that the **AXDSPX-GM33** is connected properly. If so, a chime will be heard from the front left speaker.
- Press the **Lock Down** button to save the configuration. (Do not turn ignition off until this process is completed) (Figure C)
- Select the **Bluetooth Configurations** page and disconnect the DSPX.
- Turn ignition off, close all door then lock vehicle using the key fob. The vehicle will need to sit uninterrupted for 10 minutes while the vehicle goes to sleep. (Make sure Key fob is 15 feet away from the vehicle)
- Unlock Vehicle, turn ignition on and test radio's functions.
- Adjust the DSP settings in the app as desired. Refer to the instructions under the **Setup Instructions** tab, or online at [Axxessinterfaces.com](http://Axxessinterfaces.com) for an explanation of each tab in the app.

### Locking Down Data



(Figure C)

**Last and the most important:**  
**You MUST lock down your**  
**configuration and cycle the key!!!**

## SPECIFICATIONS

Input Impedance	1M Ohm
Input Channels	6
Input Options	High Level or Low Level
Input Type	Differential balanced
Input Voltage (high level range)	0 - 28-volts (peak-to-peak)
Input Voltage (low level range)	0 - 4.9-volts (peak-to-peak)
Output Channels	10
Output Voltage	Up to 5-volts RMS
Output Impedance	50 Ohms
Equalizer Type	31 Band Graphic EQ, +/- 10dB
THD	<0.03%
Frequency Response	20Hz - 20kHz
Crossover	3-Way LPF, BPF, HPF THP per channel
Crossover Type	Linkwitz-Riley 24db slope
Sampling	48kHz
S/N Ratio	105dB @ 5-volts RMS

Operating Voltage	10-16 volts DC
Standby Current Draw	7mA
Operation Current Draw	150mA
Adjustments/Controls	Application via Bluetooth
Remote Output	12 volts DC (signal sense or with ignition)



## AXDSPX-GM33

INSTALLATION INSTRUCTIONS

Having difficulties? We're here to help.



Contact our Tech Support line at:  
**386-257-1187**



Or via email at:  
[techsupport@metra-autosound.com](mailto:techsupport@metra-autosound.com)

### **Tech Support Hours (Eastern Standard Time)**

Monday - Friday: 9:00 AM - 7:00 PM

Saturday: 10:00 AM - 5:00 PM

Sunday: 10:00 AM - 4:00 PM



**Metra recommends MECP  
certified technicians**