



## TOOLS REQUIRED

- Crimping tool and connectors, or solder gun, solder, and heat shrink
- Tape
- Wire cutter
- Zip ties

## APPLICATIONS

Visit [AxxessInterfaces.com](http://AxxessInterfaces.com) for current application list

## A2B/DSP Data Interface with Amplifier Bypass Harness Fits Select Ford Models **2018-Up\***

\*with Bang & Olufsen A2B amplifier

## INTERFACE COMPONENTS

- AXDSPX-A2B2 interface
- AXDSPX-A2B2 harness
- Amplifier bypass harness
- Radio T-Harness
- AXBK-1
- A2B-EXT
- Bass Knob
- Extension Cable

For **Dash Disassembly Instructions**, refer to [metraonline.com](http://metraonline.com). Enter the year, make, and model of the vehicle in the **Vehicle Fit Guide** for **Radio Install kits**.

Metraonline.com



## TABLE OF CONTENTS

AXDSPX-A2B2 Features .....	2
Things To Know About The AXDSP .....	3-4
Connections .....	5-6
Installation .....	7
Mobile App: AXDSP-XL App .....	8
LED Feedback .....	9
Speaker Assignment QR Code .....	12

## Download the AX-DSP-XL App

Android® 9 or higher



iOS® 12.1 or higher



**ATTENTION:** With the key out of the ignition, disconnect the negative battery terminal before installing this product. Ensure that all installation connections, especially the air bag indicator lights, are plugged in before reconnecting the battery or cycling the ignition to test this product.

**NOTE:** Refer also to the instructions included with the aftermarket radio.

## AXDSPX-A2B2 FEATURES

### VEHICLE-SPECIFIC FEATURES

---

- Designed for select vehicles with Bang & Olufsen A2B amplifiers
- Package includes the A2B data interface with built-in AXDSP-X technology, vehicle-specific T-harness, and an amplifier bypass harness
- Factory amplifier does not need to be retained
- Chimes and voice prompts go through the aftermarket amplifier
- Install location: At the factory amplifier
- Micro “B” USB updatable

### AXDSP-X DATA INTERFACE FEATURES

---

- Selectable 31-band Graphic EQ or 5-band parametric EQ on each channel with high pass, low pass, and bandpass filters
- 6 inputs and 10 individually assignable outputs
- Selectable slope (12, 24, 36, or 48db per octave)
- Selectable Graphic or Parametric EQ
- Independent equalization on each of the 10 outputs
- Each channel can be delayed independently up to 10 ms
- Clipping detection and limiting circuits
- Bass knob included
- Retains OE voice prompts (SYNC®) if vehicle is equipped
- Settings adjusted wirelessly in the free AX-DSP-XL app available for smartphones and tablets
- To be used with factory radios
- Read, write, and store configurations for future recall
- Password protect feature available in the app

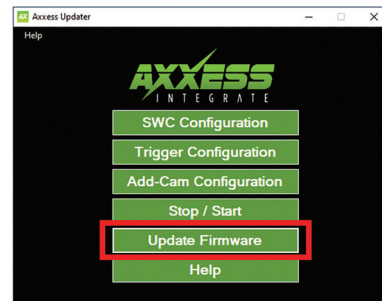
## THINGS TO KNOW ABOUT THE AXDSP



**Important:** Updating your interface with the **Axxess Updater** is critical to the interface functioning properly.

Visit [axcessinterfaces.com](http://axcessinterfaces.com)

Select **Updater Software** from the top menu bar.



 PC Axxess Updater

**Download Axxess Updater**



**Micro-B Data Transfer Cable**

**Not included**

## THINGS TO KNOW ABOUT THE AXDSP CONT.

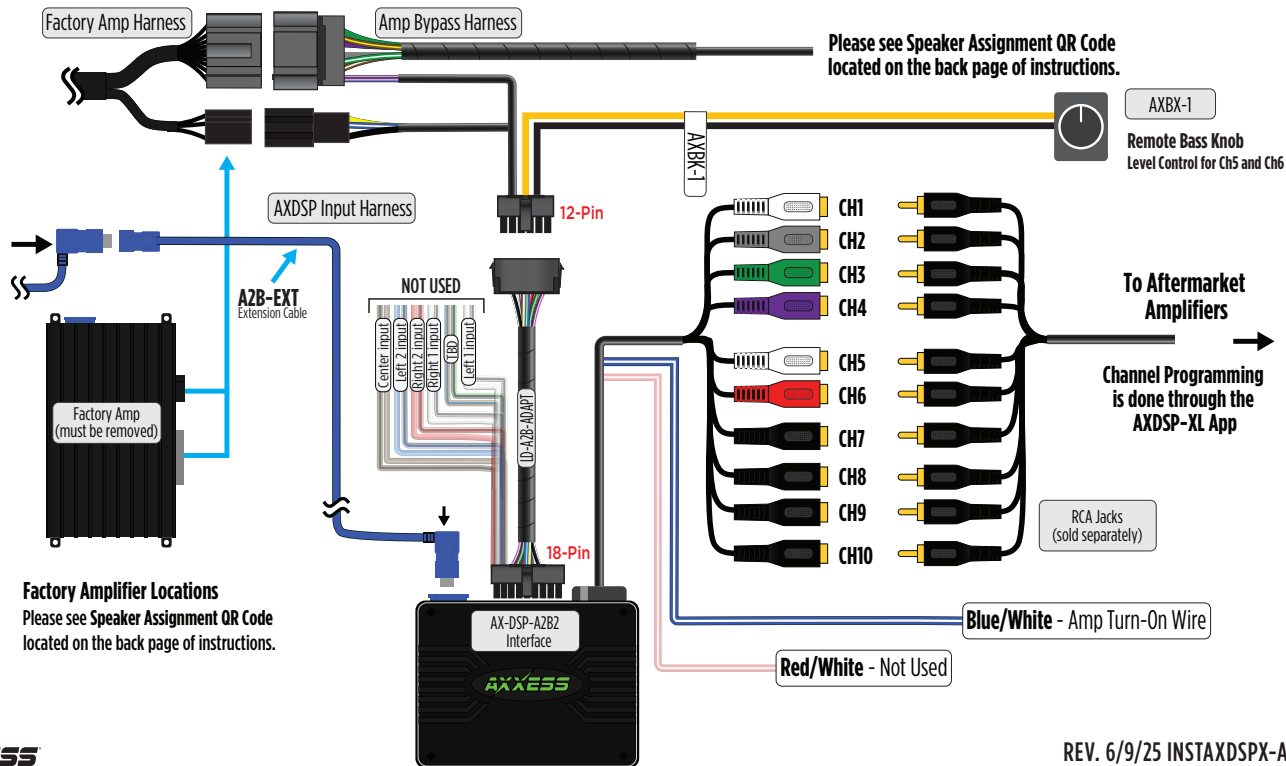
1. The factory amplifier will be completely removed from the vehicle. This interface cannot be used to add a subwoofer only. Aftermarket amplifiers will need to be added to power the vehicle speakers.
2. Installation of the **AXDSPX** will be done at the factory amplifier's location, refer to the wire chart for locations. The harnessing installed at the factory amplifier location includes the bypass harness.
3. Two **T-harnesses** are included in the kit, one will be installed behind the factory radio to access factory speaker wires powered by the radio.
4. The included bass knob will adjust the output levels of your subwoofer. To set your subwoofer channel, select the **Outputs** page within the app. Under the **Location** column select the channel connected to your sub amp. From the drop-down menu select **Subwoofer**. Don't forget to **Lock Down**.
5. Vehicle chimes will output through the instrument cluster speaker. The chime levels are fixed.
6. If running multiple amplifiers, a relay is recommended.

The **AXDSP interface** doesn't require a full understanding of equalization, crossover setting, or time delay to function properly. After the quick setup process is completed the **AXDSP interface** will output a full range signal allowing for the use of an external DSP or to use the aftermarket amplifiers settings.

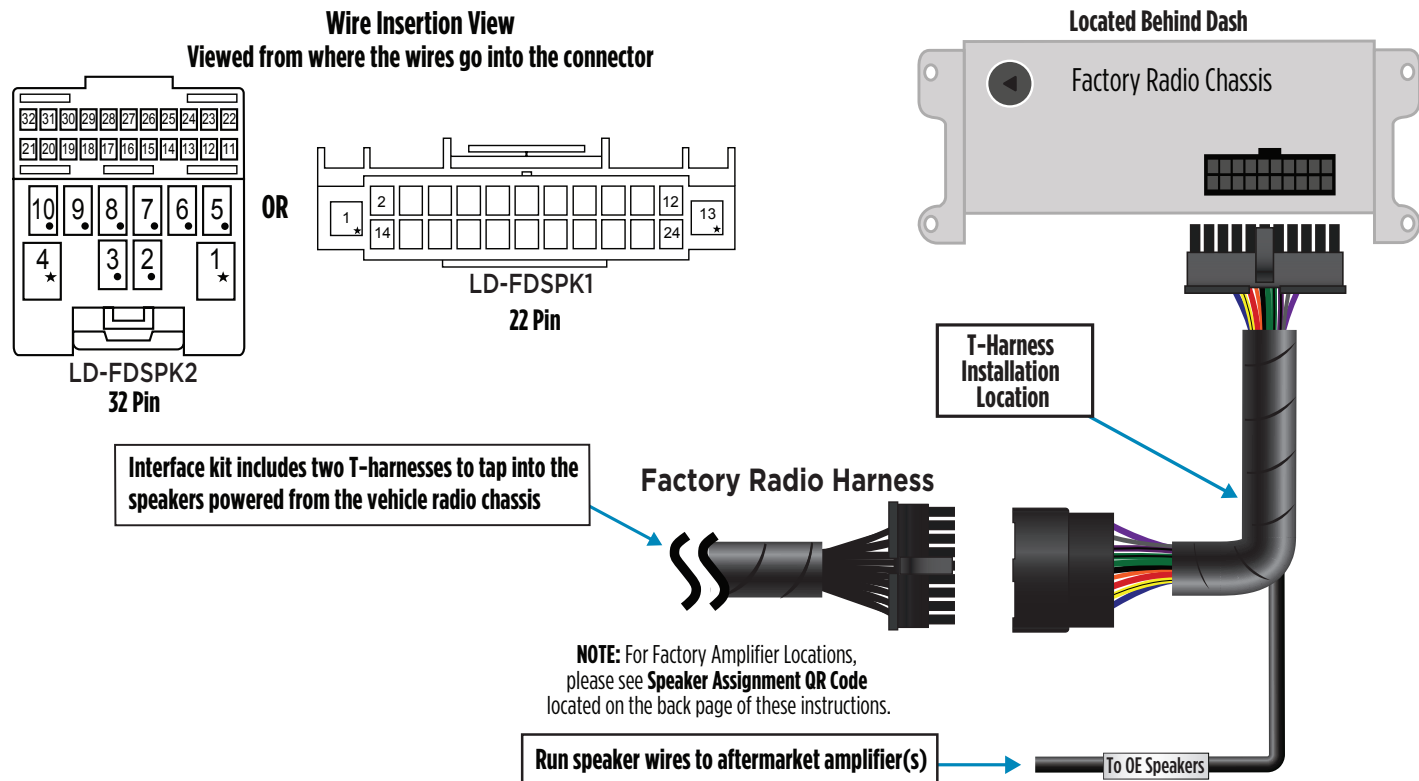
The **AXDSP** does offer all the standard features found in an external **DSP**. All settings and adjustments are made through the app. For more details on these added features please refer to the instructions under the **Setup Instructions** tab, or online at [Axxessinterfaces.com](http://Axxessinterfaces.com) for an explanation of each tab in the app.

## CONNECTIONS TO BE MADE AT THE FACTORY AMPLIFIER'S LOCATION

1. Locate the factory amp, unplug all connectors, then remove the amp.
2. Install the **AXDSPX-A2B2 harness** and make all necessary connections, but leave the amp turn-on wire disconnected.



## CONNECTIONS TO BE MADE AT THE FACTORY RADIO'S LOCATION *(CONT)*



# INSTALLATION

1. Locate the factory amp\*, unplug all connectors, then remove the amp.
2. Install the **AXDSPX-A2B2 harness** and make all necessary connections, but leave the amp turn-on wire disconnected.

**Note:** Ensure the USB connector from the factory amp is connected to the AXDSPX-A2B2.

3. Plug the 12-pin and 16-pin connectors from the **AXDSPX-A2B2 harness** into the **AXDSPX-A2B2 interface**.
4. Download and install the **AX-DSP-XL** app for your smart device.
5. Open the app and follow the instructions on the **Bluetooth® Connection** tab to pair the mobile device to the AXDSPX-A2B2. (Figure A)
6. Scroll to the **Configuration** tab then select the vehicle type. Press the **Lock Down\*\*** button to save the configuration. (Figure B)
7. Connect the amp turn-on wire from the **AXDSPX-A2B2 harness**.
8. Click the **Identify** button to confirm that the **AXDSPX-A2B2** is connected properly. If so, a chime will be heard from the front left speaker or gauge cluster. Test all functions of the installation for proper operation.
9. Adjust the DSP settings in the app as desired. Refer to the instructions under the **Setup Instructions** tab, or online at [Axessinterfases.com](http://Axessinterfases.com) for an explanation of each tab in the app.

**Note:** In these vehicles the factory radio powers some speakers.

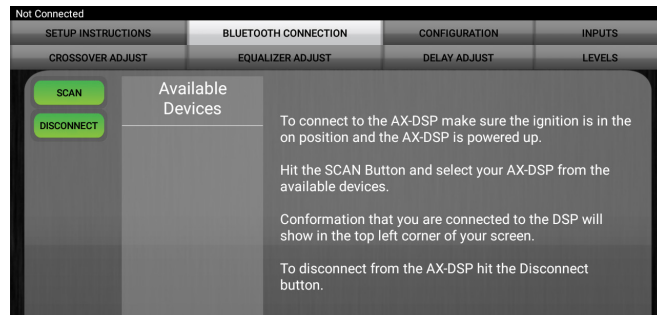
**Escape:** Front tweeters / Center channel

**Fusion:** Front tweeters / Front center channel / Rear center channel

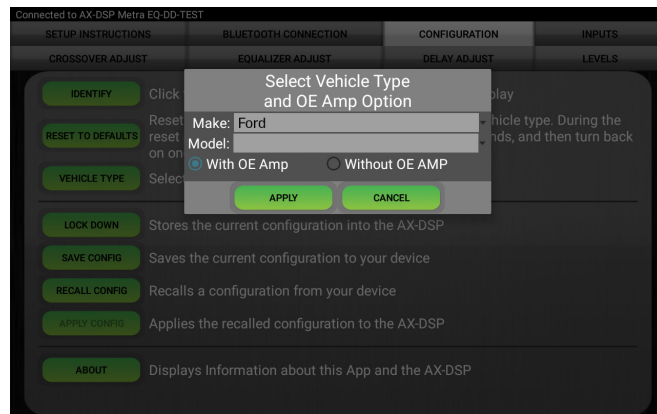
**\*Amplifier Locations: Escape:**

Driver Side Trunk Behind Rear Seat. **Fusion:** Passenger Side of Trunk Above Rear Wheel-Well.

**\*\* Anytime the interface is locked down the key must be cycled off then back on.**



(Figure A)



(Figure B)

# MOBILE APP: QUICK SETUP STEPS THROUGH AXDSP-XL APP

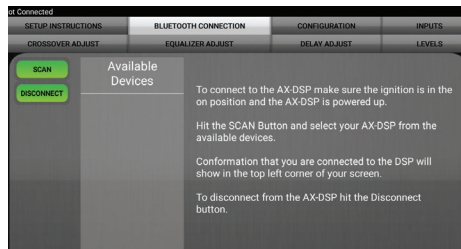
Android 9® or higher



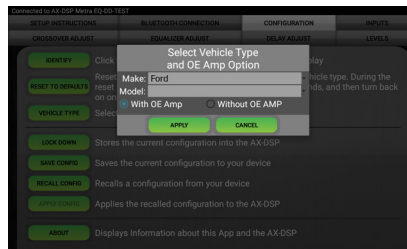
iOS® 12.1 or higher



1. Download and install the **AX-DSP-XL** app for your smart device.
2. Turn Vehicle Ignition on. Make sure the Remote Turn on lead is disconnected.
3. Open the app: Select **Bluetooth® Connections** page.
  - Select **Scan**, all available AXDSP devices within range will be displayed. Select your AXDSP and hit connect. (Figure A)
4. Select the Configuration page.
  - Select **Vehicle Type** Icon
  - Select the Vehicle Make: (Example: **FORD**)
  - Select the Vehicle's model: \_\_\_\_ (Example: **BRONCO**)
  - Select **With OE Amp**
  - Hit **Apply** (Figure B)
5. Make sure radio volume is all the way down.
6. Connect the amp turn-on wire from the **AXDSPX-A2B2** harness to the aftermarket amplifiers.



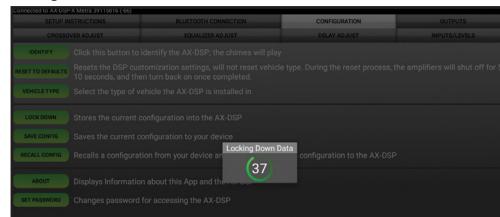
(Figure A)



(Figure B)

7. From the **Configuration** page click the **Identify** button to confirm that the **AXDSPX-A2B2** is connected properly. If so, a chime will be heard from the front left speaker.
8. Press the **Lock Down** button to save the configuration. (Do not turn ignition off until this process is completed) (Figure C)
9. Select the **Bluetooth® Configurations** page and disconnect the DSPX.
10. Turn ignition off, close all doors then lock vehicle using the key fob. The vehicle will need to sit uninterrupted for 10 minutes while the vehicle goes to sleep. (Make sure Key fob is 15 feet away from the vehicle)
11. Unlock Vehicle, turn ignition on and test radio's functions.
12. Adjust the DSP settings in the app as desired. Refer to the instructions under the **Setup Instructions** tab, or online at [Axxessinterfaces.com](http://Axxessinterfaces.com) for an explanation of each tab in the app.

## Locking Down Data



(Figure C)

**Last and the most important:  
You MUST lock down your  
configuration and cycle the key!!!**



## A2B LED FEEDBACK

<b>LED FEEDBACK</b>	<b>1 blink every 5 seconds</b> = All good
	<b>2 blinks every 5 seconds</b> = No A2B signal
	<b>3 blinks every 5 seconds</b> = No CAN communication

[illegible][illegible]

[illegible]



## AXDSPX-A2B2

INSTALLATION INSTRUCTIONS



Having difficulties? We're here to help.



Contact our Tech Support line at:

**386-257-1187**



Or via email at:

[techsupport@metra-autosound.com](mailto:techsupport@metra-autosound.com)

### Tech Support Hours (Eastern Standard Time)

Monday - Friday: 9:00 AM - 7:00 PM

Saturday: 10:00 AM - 5:00 PM

Sunday: 10:00 AM - 4:00 PM

Visit [AxxessInterfaces.com](http://AxxessInterfaces.com) for more detailed information about the product and up-to-date vehicle specific applications

### Speaker Assignment



**Metra recommends MECP  
certified technicians**