



## INTERFACE COMPONENTS

- AXAMP-TY1 Amplifier Integration interface
- AXAMP-TY1 interface harness
- AXAMP-TY1 vehicle T-harness
- Bass knob

## APPLICATIONS

Visit [AxxessInterfaces.com](http://AxxessInterfaces.com) for current application list

## Amplifier Integration Interface

### Fits Select Toyota/Lexus Models 2001-2015

### INTERFACE FEATURES

- Designed for amplified systems
- Provides 6 channels of 5-volt RMS audio
- Non-fading full range output (channels 5 & 6)
- Simple plug-n-play installation behind the radio
- No programming required
- Dual-colored LED feedback light
- Input: 50W per channel
- Amp turn-on trigger (DC) 250mA
- 2-channel S/PDIF out (front)

For **Dash Disassembly Instructions**, refer to [metraonline.com](http://metraonline.com). Enter the year, make, and model of the vehicle in the **Vehicle Fit Guide** for **Radio Install kits**.

[www.MetraOnline.com](http://www.MetraOnline.com)



### TABLE OF CONTENTS

Installation & Installation Options.....	2
Adding Amp(s) to a Factory System.....	3
Troubleshooting.....	4

### TOOLS & INSTALLATION ACCESSORIES REQUIRED

- Crimping tool and connectors, or solder gun, solder, and heat shrink
- Tape
- Wire cutter
- Zip ties
- Multimeter

Visit [AxxessInterfaces.com](http://AxxessInterfaces.com) for more detailed information about the product and up-to-date vehicle specific applications.

**ATTENTION:** With the key out of the ignition, disconnect the negative battery terminal before installing this product. Ensure that all installation connections, especially the air bag indicator lights, are plugged in before reconnecting the battery or cycling the ignition to test this product.

**NOTE:** Refer also to the instructions included with the aftermarket accessory before installing this device.

## INSTALLATION OPTIONS

### Adding a full-range of amps and subwoofer to a factory system:

This feature offers the ability to add a full-range amp and sub to a factory system.\*

\*For amplified models the amp must be bypassed/unplugged. Refer to [www.MetraOnline.com](http://www.MetraOnline.com) for the vehicle specific amplifier bypass harness.

**Note:** The interface provides a 12-volt 1-amp output to turn on aftermarket amp(s). If installing multiple amps, an SPDT automotive relay will be required if the amp turn-on current of all amps combined exceeds 1-amp. See MetraOnline.com for available relays.

## INSTALLATION

### Installation

1. Disassemble the dash, unplug all connectors, and remove the factory radio.\*
2. Install the **AXAMP-TY1 vehicle T-harness** to the vehicle radio harness and make all the necessary connections.
3. Plug the 20-pin harness from the **AXAMP-TY1 T-harness** into the interface.
4. Connect the 2-pin **Amp Turn On Wire** to the interface and then connect to the aftermarket amplifiers
5. Connect RCAs to the **FRONT, REAR or SUB** output of the **AXAMP-TY1 interface** and then connect to the corresponding amplifier.
6. Adjust your aftermarket amplifier to a desired listening level.

### Bass Knob Adjustment:

The bass knob connects to the 2 wires from the 20-pin connector labeled **BASS KNOB**.

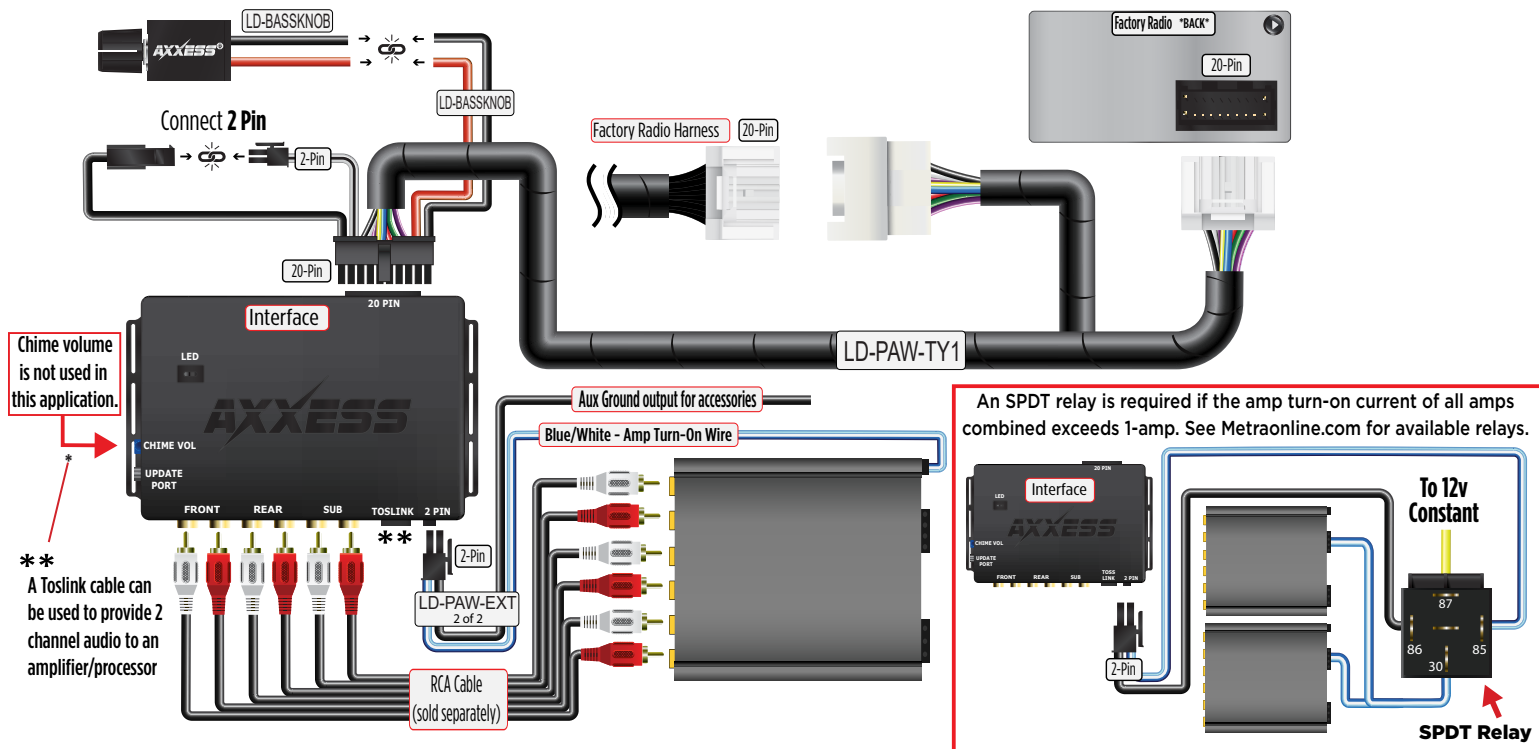
The bass knob is used to adjust the output of Channels 5 & 6 of the AXAMP.

Adjustment is as follows:

**Counterclockwise** turn lowers the volume of channels 5 & 6.

**Clockwise** turn raises the volume of channels 5 & 6.

## ADDING AMPLIFIER/AMPLIFIERS TO A FACTORY SYSTEM





## TROUBLESHOOTING

### Final LED Feedback

At the end of programming the LED will turn **Solid Green** which indicates programming was successful. If the LED didn't turn **Solid Green**, reference the list below to understand which programming section the problem may stem from.

Feedback Light	Condition/Status
Solid Green	All Good
Solid Red	Missing Can Frames
Blink Red	Clipping Output
Green/Red	Missing Adv. (Comm Frames)

Scan QR Code



Further troubleshooting steps and information can be located at:

[axxessinterfaces.com/product/AXAMP-TY1](https://axxessinterfaces.com/product/AXAMP-TY1)

Having difficulties? We're here to help.



Contact our Tech Support line at:

**386-257-1187**



Or via email at:

[techsupport@metra-autosound.com](mailto:techsupport@metra-autosound.com)

### Tech Support Hours (Eastern Standard Time)

Monday - Friday: 9:00 AM - 7:00 PM

Saturday: 10:00 AM - 5:00 PM

Sunday: 10:00 AM - 4:00 PM



**Metra recommends MECP  
certified technicians**