



AXRSCH-CH5

INSTALLATION INSTRUCTIONS



Note: This kit will function in both Single-Zone and Dual-Zone vehicles:

- All HVAC functions will be retained.
- Single-Zone vehicles will only get status feedback of the HVAC functions, while Dual-Zone vehicles can also be controlled through the radio screen.
- Compass is only retained on vehicles equipped with the UConnect 3 (5" touchscreen).
- The External Speaker is only required in vehicles with safety group features.

www.MetraOnline.com



For **Dash Disassembly Instructions**, refer to metraonline.com. Enter the year, make, and model of the vehicle in the **Vehicle Fit Guide** for **Radio Install kits**.

Radio Status Control Harness

Fits Select Chrysler Models **2013-2023**

Visit AxxessInterfaces.com for more detailed information about the product and up-to-date vehicle specific applications

FEATURES

- AXRSC radio status control interface required (sold separately)
- Designed for amplified or non-amplified vehicles
- Provides accessory power (12-volt 10-amp)
- Retains R.A.P. (Retained Accessory Power)
- Provides NAV outputs (parking brake, reverse, and speed sense)
- Retains factory backup camera
- Allows a visual of HVAC and gauges on the aftermarket radio screen
- Allows adjustment of HVAC functions through aftermarket radio screen
- Retains audio controls on the steering wheel
- Allows for auto stop/start override (if equipped)
- Works in both single and dual-zone vehicles
- Retains safety chimes through an included off-board speaker
- Allows the retention and adjustment of the OE personalization settings
- Plug-n-play installation
- **Note:** Backup camera not retained on Jeep JL/JT

KIT COMPONENTS

- LD-CH5-PIO
- LD-CHRYHAZT
- LD-CAN3T
- LD-AX-SPK

TABLE OF CONTENTS

Interface Installation: Amp & Non-Amp.....	2-3
TPMS & LD-CHRYHAZT Connection.....	4-5
AXRSC Configuration	6

TOOLS REQUIRED

- Crimping tool & connectors, or solder gun, solder, & heat shrink • Tape • Wire cutter • Zip ties

WIRING & ANTENNA CONNECTIONS

Included with Kit: Wiring Harness

Sold separately: 40-EU55, GPS Antenna Adapter

NOTE: Universal radio harness included.

There are many Plug-n-play harnesses available.

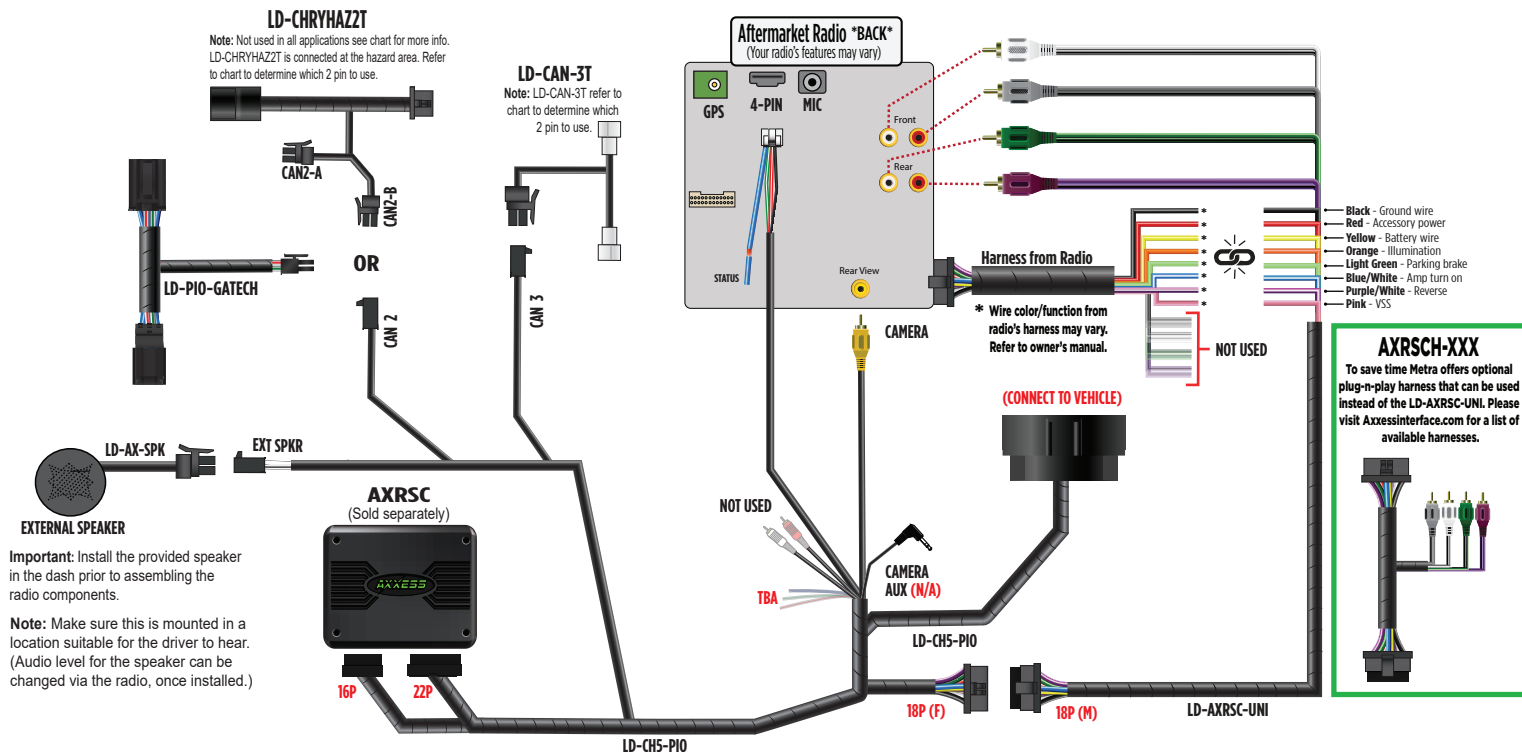
Please see Axxessinterface.com for more details.

ATTENTION: With the key out of the ignition, disconnect the negative battery terminal before installing this product. Ensure that all installation connections, especially the air bag indicator lights, are plugged in before reconnecting the battery or cycling the ignition to test this product.

NOTE: Refer also to the instructions included with the aftermarket accessory before installing this device.

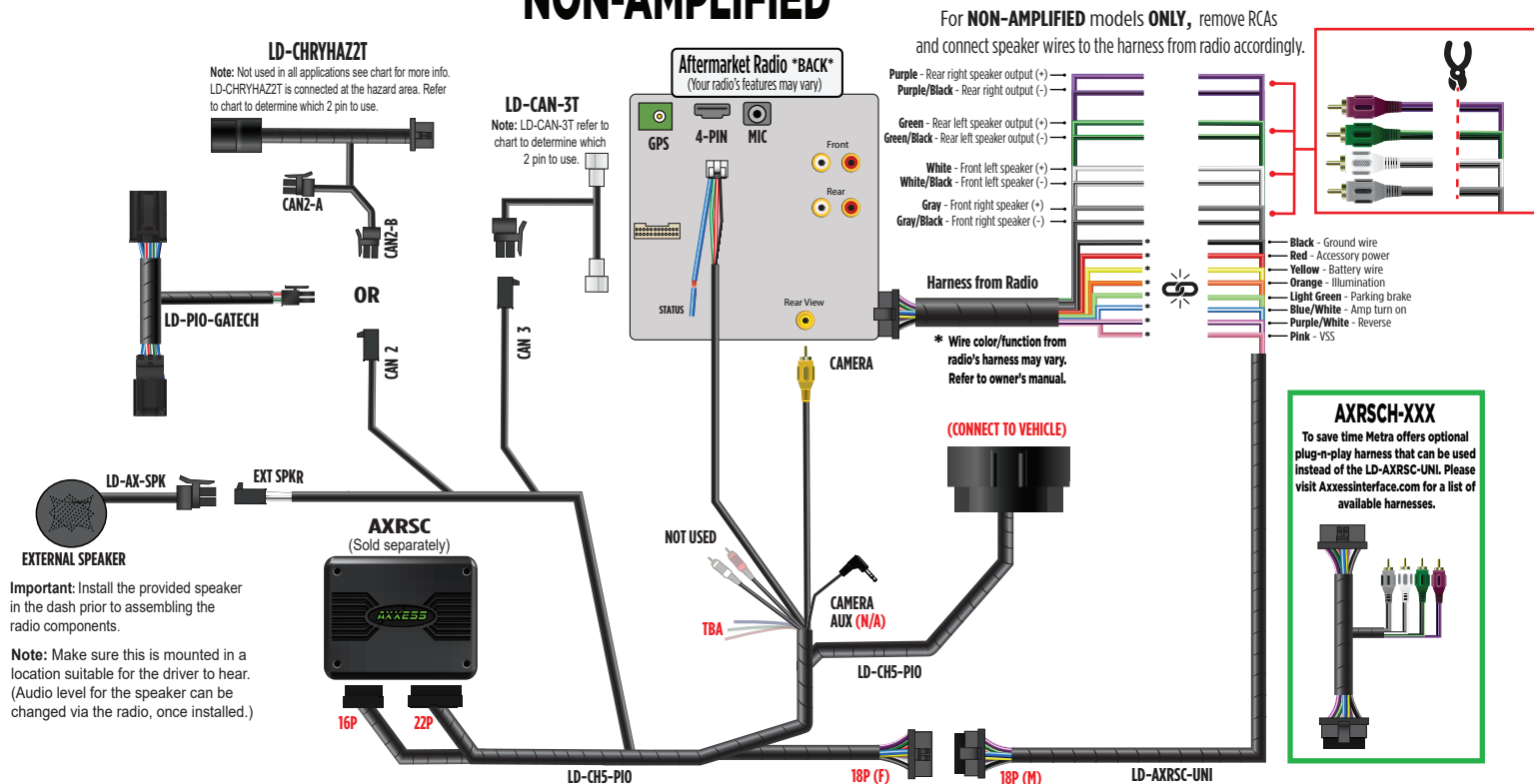
INTERFACE INSTALLATION

AMPLIFIED

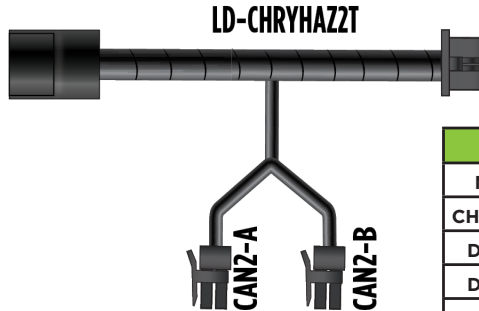


INTERFACE INSTALLATION

NON-AMPLIFIED



TPMS VISUAL/LD-CHRYHAZ2T CONNECTION

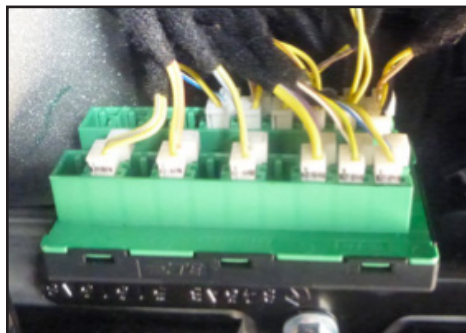


(LD-CHRYHAZ2T) APPLICATIONS CH5					
MAKE	MODEL	FROM	TO	LD-CHRYHAZ2T 2PIN CONNECTION	QUALIFIER
CHRYSLER	300	2015	2023	B	
DODGE	CHALLENGER	2015	2023	B	
DODGE	CHARGER	2015	2023	B	
DODGE	DURANGO	2021	2023	B	ASSOCIATED SCREEN
DODGE	DURANGO	2014	2020	B	
JEEP	COMPASS	2017	2021	A	
JEEP	CHEROKEE	2014	2020	B	
JEEP	JL	2018.5	2023	A	
JEEP	JT	2020	2023	A	
JEEP	RENEGADE	2015	2017	Not Needed	
JEEP	RENEGADE	2018	2020	A	
RAM	1500	2019	2022	B	CLASSIC (DS BODY)
RAM	1500	2013	2018	B	

Continued on next page

TPMS VISUAL/LD-CHRYHAZ2T CONNECTION *Cont.*

STAR Connector port



If equipped with TPMS, and you wish to add the visual to the Pioneer Radio screen, see chart at right

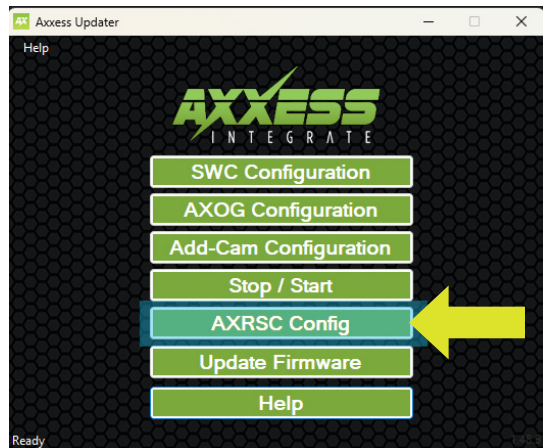
MAKE	MODEL	QUALIFIER	FROM	TO	CAN3 LOCATION
CHRYSLER	300		2015	2023	Passenger side behind glovebox
DODGE	CHARGER		2015	2023	Passenger side behind glovebox
DODGE	CHALLENGER		2015	2023	Passenger side behind glovebox
DODGE	DURANGO	ASSOCIATED SCREEN	2021	2023	Driver side kick high
DODGE	DURANGO		2014	2020	Driver side kick high
JEEP	CHEROKEE		2014	2020	Passenger side behind glovebox
JEEP	COMPASS		2017.5	2021	Passenger side behind glovebox
JEEP	JL		2018.5	2023	Passenger side behind glovebox
JEEP	JT		2020	2023	Passenger side behind glovebox
JEEP	RENEGADE		2015	2023	Not required
RAM	1500	DT BODY ASSOCIATED SCREEN	2019	2022	Driver side kick high
RAM	1500	CLASSIC (DS BODY)	2019	2022	Driver side kick high
RAM	1500	ALL	2013	2018	Driver side kick high

AXXESS UPDATER PROGRAM: AXRSC CONFIGURATION

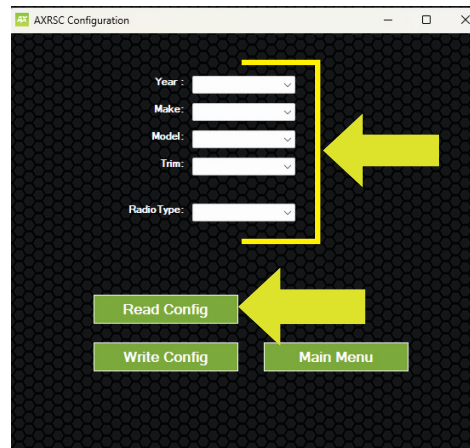
AXRSC Configuration

1. Open the Axxess Updater program
2. Select “AXRSC Config”. (Figure A)
3. Enter **Year, Make, and Model** of vehicle you are working on. (Figure B)
4. Select **Radio Type**. (Figure B)
5. Connect the **AXRSC interface** to your computer
6. Select “**Write Config**” (Figure B), and wait for confirmation of “**Configuration was written successfully**” to show on the screen. (Figure C)
7. Click **OK**, disconnect the **AXRSC interface** and install in vehicle.

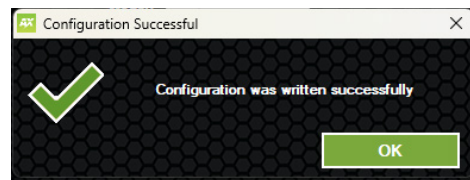
NOTE: Plugging in the interface and selecting “**Read Config**” will read what the **AXRSC interface** is programmed as.



(Figure A)



(Figure B)



(Figure C)

[illegible]



AXRSCH-CH5

INSTALLATION INSTRUCTIONS

Having difficulties? We're here to help.



Contact our Tech Support line at:

386-257-1187



Or via email at:

techsupport@metra-autosound.com

Tech Support Hours (Eastern Standard Time)

Monday - Friday: 9:00 AM - 7:00 PM

Saturday: 10:00 AM - 5:00 PM

Sunday: 10:00 AM - 4:00 PM



**Metra recommends MECP
certified technicians**