



APPLICATIONS

TOYOTA

4Runner	2020-2024	RAV4	2019-2021
Avalon	2019-2022	Sequoia	2020-2022
C-HR	2019-2022	Sienna	2018-2023
Camry	2018-2024	Tacoma	2020-2023
Corolla	2019-2021	Tundra	2020-2021

Data Interface with SWC

Fits Select Toyota Models 2018-2024

INTERFACE FEATURES

- Designed for amplified and non-amplified systems
- Provides accessory power (12-volt 10-amp)
- Retains R.A.P. (Retained Accessory Power)
- Provides NAV outputs (parking brake, reverse, and speed sense)
- Built-in features like SWC & Auto-Detect
- Designed to work with a major radio brands
- Auto-detect feature - automatically detects the vehicle type, radio connection, and preset controls
- Ability to dual assign steering wheel control buttons
- Can be manually programmed for most vehicles
- Retains settings, even after battery disconnection
- Retains balance and fade (excludes amplified models)
- Retains the factory backup camera if equipped
- Micro "B" USB updatable

For **Dash Disassembly Instructions**, refer to Metraonline.com. Enter the year, make, and model of the vehicle in the **Vehicle Fit Guide** for **Radio Install kits**.

www.MetraOnline.com

Product Info



TABLE OF CONTENTS

Interface Connections.....	2
Programming.....	3
Troubleshooting.....	4

Visit AxxessInterfaces.com for more detailed information about the product and up-to-date vehicle specific applications.

TOOLS & INSTALLATION ACCESSORIES REQUIRED

- Crimping tool and connectors, or solder gun, solder, and heat shrink
- Tape
- Wire cutter
- Zip ties

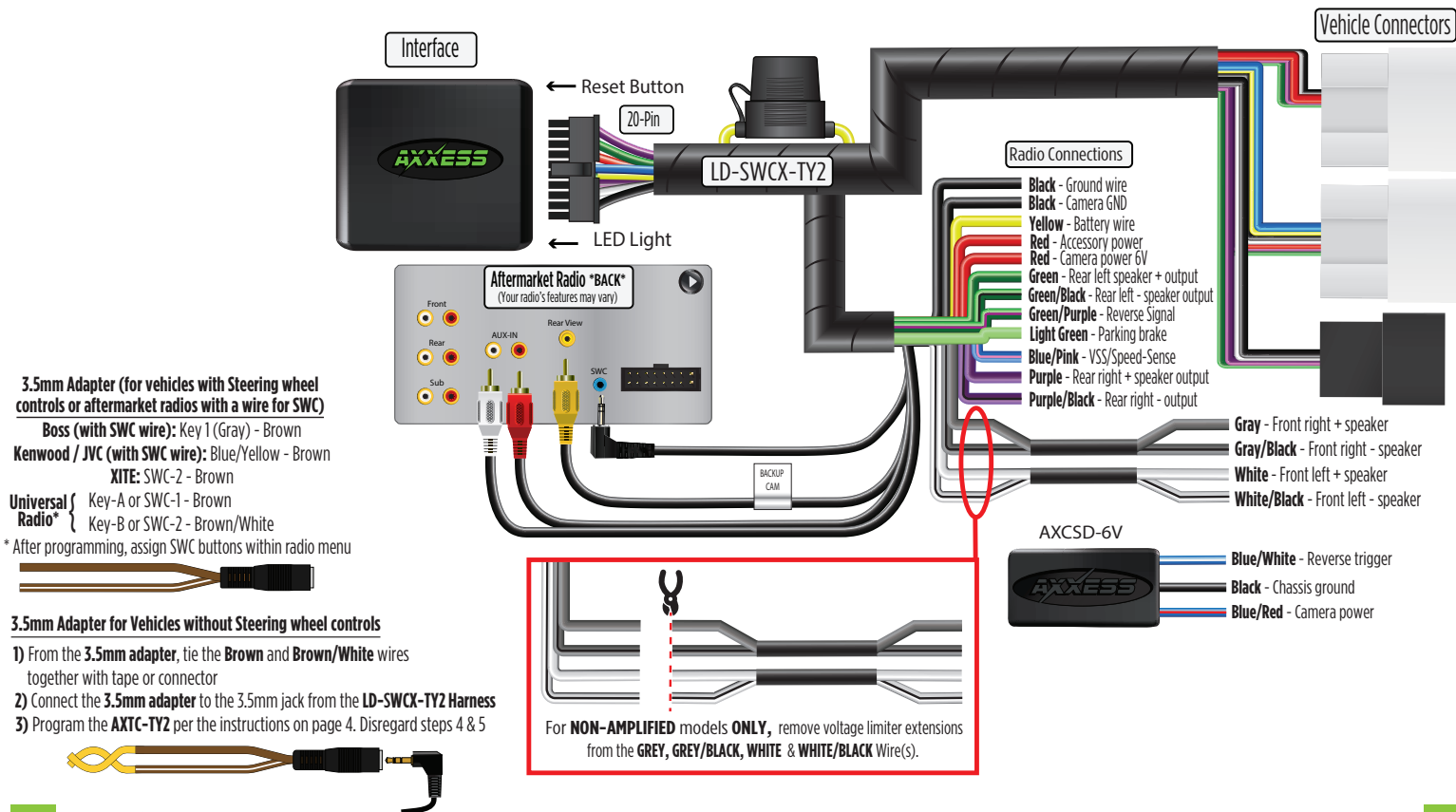
INTERFACE COMPONENTS

- AXTC-TY2 interface
- LD-SWCX-TY2 harness
- Female 3.5mm jack


ATTENTION: With the key out of the ignition, disconnect the negative battery terminal before installing this product. Ensure that all installation connections, especially the air bag indicator lights, are plugged in before reconnecting the battery or cycling the ignition to test this product.


NOTE: Refer also to the instructions included with the aftermarket accessory before installing this device.


INTERFACE CONNECTIONS




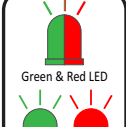
PROGRAMMING

- 

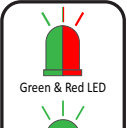
1. Open the driver's door, and keep open during the programming process.
- 

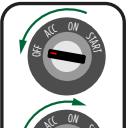
2. Cycle the ignition on.
- 


3. Connect the **AXTC-TY2 harness** to the **AXTC-TY2 interface**, and then to the wiring harness in the vehicle.
- 

4. The **AXTC** will enter auto-detect mode. No additional action is required.
- 

5*. The LED will flash **Green & Red** while the interface programs the radio to the steering wheel controls. Once programmed, the LED will go out, then produce a pattern which will identify the radio type installed. Refer to the **Radio LED Feedback** section under **Troubleshooting** for radio types.

*Only applicable if vehicle came with steering wheel controls
- 

6. The LED will go out, then once again quickly flash **Green & Red** while the interface programs itself to the vehicle. Once programmed, the LED will go out again, then turn solid **Green**.
- 

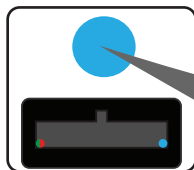
7. Cycle the ignition off, then back on.
- 

8. Test all functions of the installation for proper operation.

Note: If the vehicle's **Steering Wheel Controls** do not function after the **AXTC-TY2** has completed its programming sequence, hit the reset button on the interface to restart the programming sequence and test. Refer to **LED Feedback Chart** for programming information if needed.

TROUBLESHOOTING

1. If the interface fails to function, press and release the reset button, then repeat the programming process from step 4 to try again.



LED
Light

Reset
Button

QR Code Scan Here



Further troubleshooting steps and information can be located at:

axxessinterfaces.com/product/AXTC-TY2

2. **Final LED Feedback**

At the end of programming the LED will turn **Solid Green** which indicates programming was successful. If the LED didn't turn **Solid Green**, reference the list below to understand which programming section the problem may stem from.

LED Light	Radio Programming Section	Vehicle Programming Section
Solid Green	Pass	Pass
Slow Red Flash	Fail	Pass
Slow Green Flash	Pass	Fail
Solid Red	Fail	Fail

Note: If the LED shows **Solid Green** for **Pass** (indicating everything programmed correctly), yet the steering wheel controls don't work, make sure that the 3.5mm jack is plugged in, and plugged into the correct jack in the radio. Once corrected, press the reset button, then program again.

Having difficulties? We're here to help.



Contact our Tech Support line at:

386-257-1187



Or via email at:
techsupport@metra-autosound.com

Tech Support Hours (Eastern Standard Time)

Monday - Friday: 9:00 AM - 7:00 PM

Saturday: 10:00 AM - 5:00 PM

Sunday: 10:00 AM - 4:00 PM



**Metra recommends MECP
certified technicians**